

**2,717 SF**

DO NOT DISTURB TENANT  
**AVAILABLE**



**6,118 SF**  
FORMER AMAZON GO  
**AVAILABLE**



## THE FARM AT MILL CREEK

### 13209 39th Ave SE, Mill Creek, WA 98012

The Farm at Mill Creek, a master planned community, boasts over 38,112 square feet of retail space supported by 500 residential apartments on approximately 17 acres. The Property is located on the highly trafficked 132nd St SE, which sees in excess of 31,000 vehicles per day and serves as a major thoroughfare, connecting Mill Creek residents to State Route 9, Interstate 5 and downtown Seattle.

ALEX VLASKI

425.505.2700

alexv@jshproperties.com

AARON BENNETT

206.859.4500

aaronb@jshproperties.com



JSH | PROPERTIES, INC.



## THE FARM AT MILL CREEK - RETAIL AVAILABLE NOW!

- » Rare retail space available in master planned community at property entrance
- » Join Xfinity, Pure Barre, iSpa, Tapped Mill Creek, Pet Evolution, Akane Ramen and more!
- » Serves over 500 multifamily units onsite and over 18,000 population within a one mile radius.
- » 31,000 vehicles per day on 132nd St SE
- » Connects Mill Creek residents to State Route 9, Interstate 5 and downtown Seattle

# THE FARM AT MILL CREEK



BLDG C	Pet Evolution
	Pure Barre
	Small Threads
BLDG B	Akane Ramen
AVAILABLE: 2,717SF	Carbon Health <i>Do not disturb tenant.</i>
BLDG A2	
AVAILABLE: 6,118 SF	
BLDG A1	iSpa
	Brianna's Cafe
	Tapped Mill Creek
BLDG A3	Rare Society
BLDG A4	Xfinity
	Rustic Cork Wine Bar & Bistro
BLDG D	



THE INFORMATION CONTAINED HEREIN HAS BEEN GIVEN TO US BY SOURCES WE DEEM RELIABLE. WE HAVE NO REASON TO DOUBT ITS ACCURACY, BUT WE DO NOT GUARANTEE IT. ALL INFORMATION SHOULD BE VERIFIED PRIOR TO PURCHASE OR LEASE. SITE PLANS ARE NOT TO SCALE.

# THE FARM AT MILL CREEK

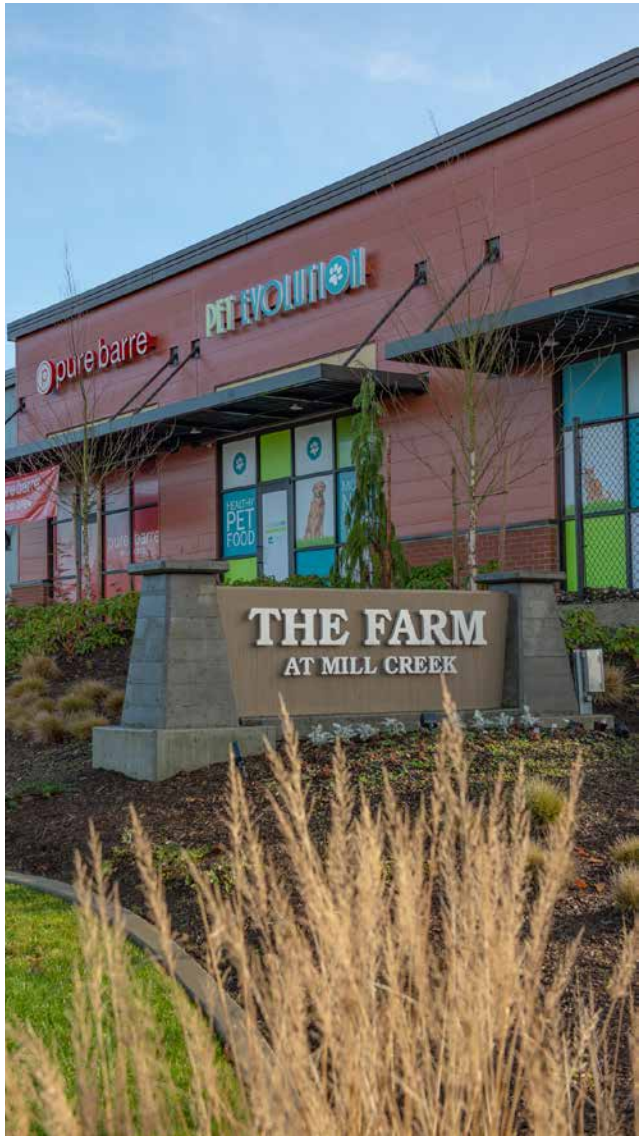
AVAILABLE	RSF	BASE RENT	NNN EST./SF	
<b>Building A2</b>	6,118	\$42.00	\$18.00	Former AmazonGo
<b>Building B</b>	2,717	\$52.00	\$18.00	Carbon Health - <i>Do not disturb tenant.</i>



Fantastic visibility from 132nd Street.



Convenient parking at entrance.



THE INFORMATION CONTAINED HEREIN HAS BEEN GIVEN TO US BY SOURCES WE DEEM RELIABLE. WE HAVE NO REASON TO DOUBT ITS ACCURACY, BUT WE DO NOT GUARANTEE IT. ALL INFORMATION SHOULD BE VERIFIED PRIOR TO PURCHASE OR LEASE. SITE PLANS ARE NOT TO SCALE.

# DEMOGRAPHICS ~ 1 MILE RADIUS

## KEY FACTS



18,398

Population



39.1

Median Age



2.8

Average Household Size



\$176,052

2023 Average Household Income (Esri)



3%

No High School Diploma



16%

High School Graduate



31%

Some College



50%

Bachelor's/Grad/Prof Degree

## EMPLOYMENT



78%

White Collar



15%

Blue Collar



7%

Services



192

Total Businesses



1,521

Total Employees

## BUSINESS

## ANNUAL HOUSEHOLD SPENDING



\$3,607

Apparel & Services



\$333

Computers & Hardware



\$6,214

Eating Out



\$5,767

Travel



\$182

Theatre/Operas/Concerts



\$127

Movies/Museums/Parks



\$10,390

Groceries



\$10,638

Health Care



\$138

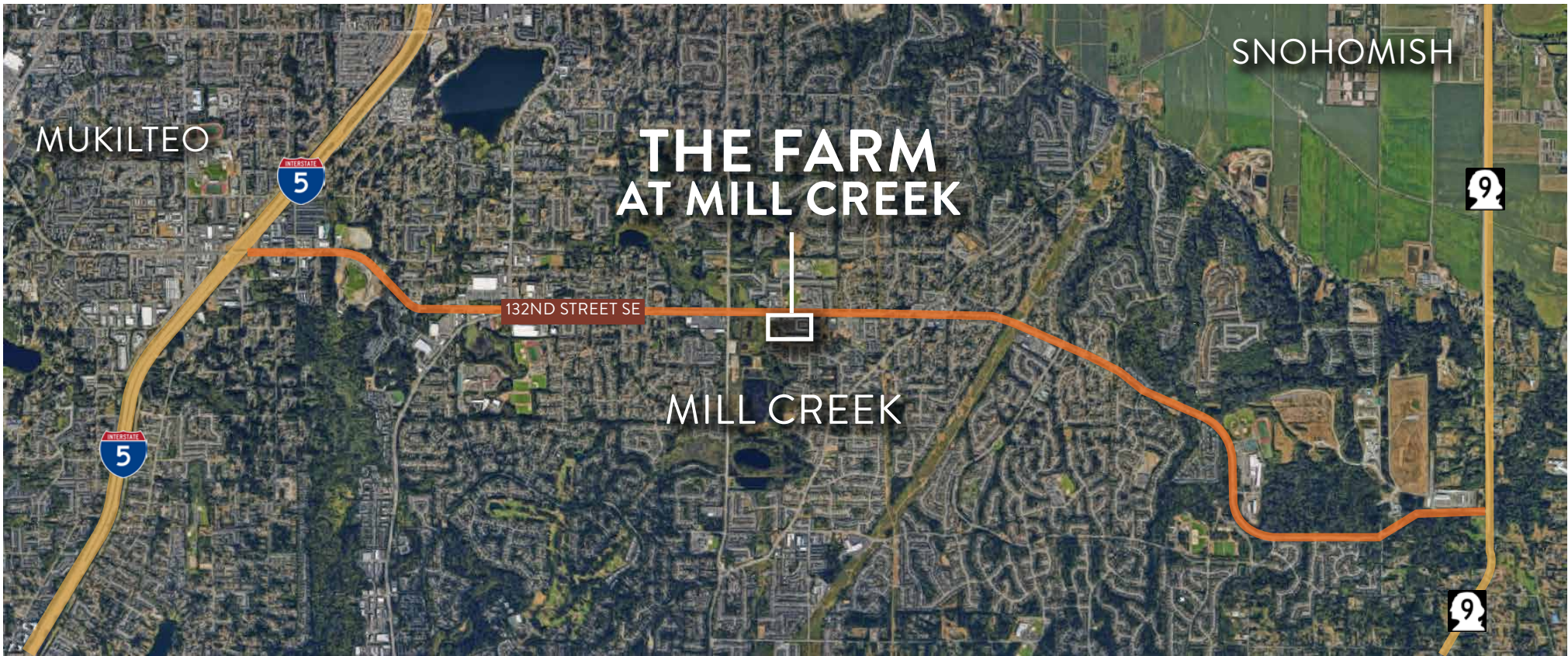
Sports Events



\$13

Online Games

## ANNUAL LIFESTYLE SPENDING



2025 DEMOGRAPHICS	1 MILE	3 MILE	5 MILE
Population	18,398	118,523	282,963
Daytime Population	12,035	88,269	209,632
Households	6,543	42,461	103,853
Avg. HH Income	\$176,052	\$166,390	\$146,720
Median Age	39.1	38.4	37.3

THE INFORMATION CONTAINED HEREIN HAS BEEN GIVEN TO US BY SOURCES WE DEEM RELIABLE. WE HAVE NO REASON TO DOUBT ITS ACCURACY, BUT WE DO NOT GUARANTEE IT. ALL INFORMATION SHOULD BE VERIFIED PRIOR TO PURCHASE OR LEASE. SITE PLANS ARE NOT TO SCALE.