

MEDICAL OFFICE SPACE FOR LEASE

Immediately adjacent to the EvergreenHealth Medical Center.

1,160 SF
AVAILABLE



Evergreen Professional Plaza

12911 120TH AVENUE NE | KIRKLAND, WA 98034

ALEX VLASKI

425.505.2700

alexv@jshproperties.com

 JSH | PROPERTIES, INC.

jshproperties.com

EVERGREEN PROFESSIONAL PLAZA



| AVAILABLE | SF | ASKING RENT | EST. NNN | |
|-----------|----------|-------------|---------------|---|
| SUITE E60 | 1,160 SF | \$30.00/SF | \$18.00/sf/yr | Utilities included, excluding in-suite janitorial and internet. |

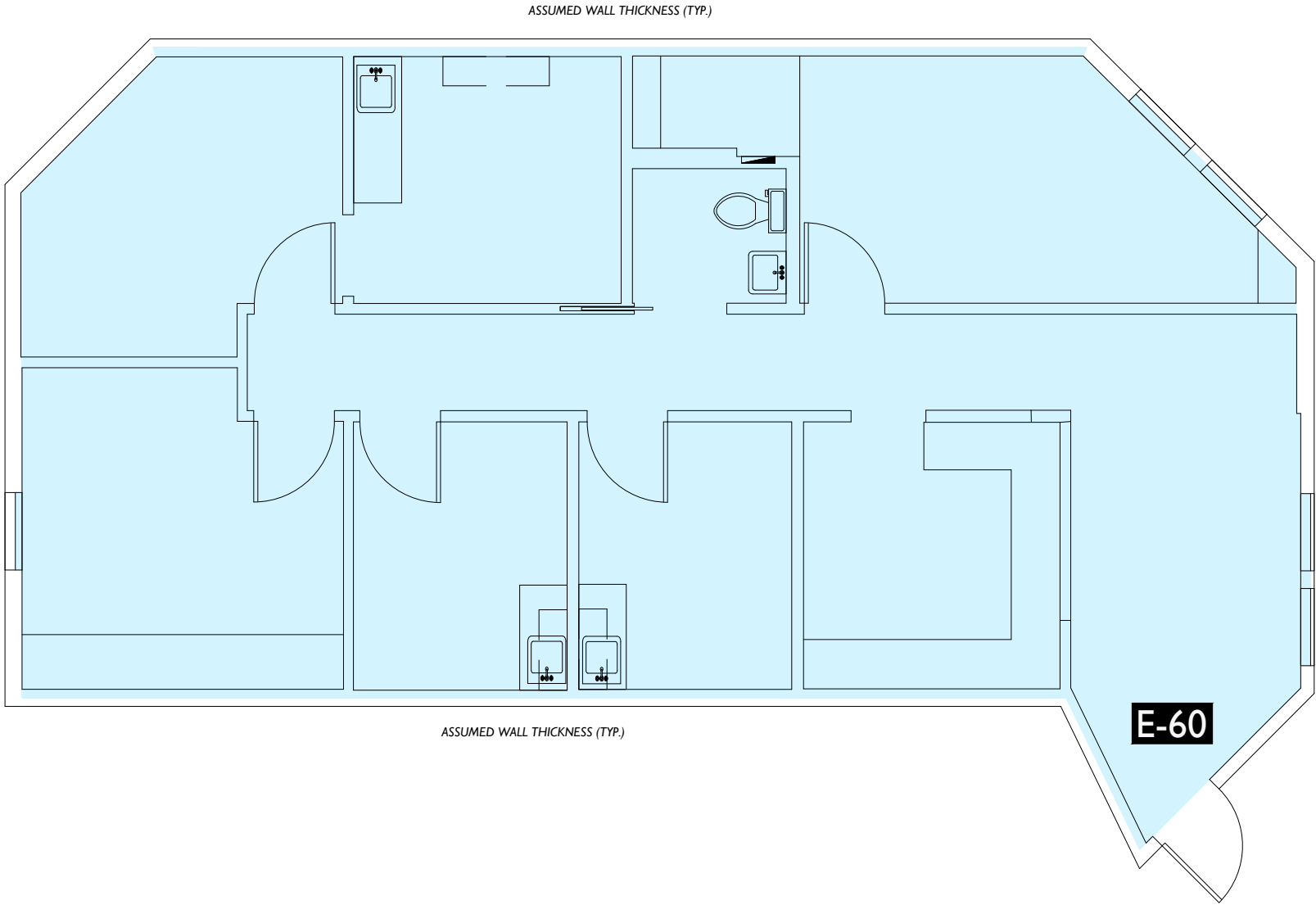
*Strong lineup of regional medical professionals with excellent visibility and access.
Superb location adjacent to Evergreen Hospital and Totem Lake Village*



THE INFORMATION CONTAINED HEREIN HAS BEEN GIVEN TO US BY THE OWNER OF THE PROPERTY OR OTHER SOURCES WE DEEM RELIABLE. WE HAVE NO REASON TO DOUBT ITS ACCURACY, BUT WE DO NOT GUARANTEE IT. ALL INFORMATION SHOULD BE VERIFIED PRIOR TO PURCHASE OR LEASE. SITE PLANS ARE NOT TO SCALE. MAP INFORMATION AND MERCHANTS SHOWN ARE SUBJECT TO CHANGE.



| AVAILABLE | SF | ASKING RENT | EST. NNN | NOTES |
|-----------|----------|-------------|---------------|---|
| SUITE E60 | 1,160 SF | \$30.00/SF | \$18.00/sf/yr | Utilities included, excluding in-suite janitorial and internet. |





Property Highlights



- » Located in Totem Lake in Kirkland, just off I-405
- » Immediately adjacent to the **EvergreenHealth Medical Center**
- » Located in Kirkland's densely populated medical market
- » Neighbors to **The Village at Totem Lake**, anchored by Whole Foods
- » Eight buildings, consisting of 75,807 SF, built in 1972 and 2003

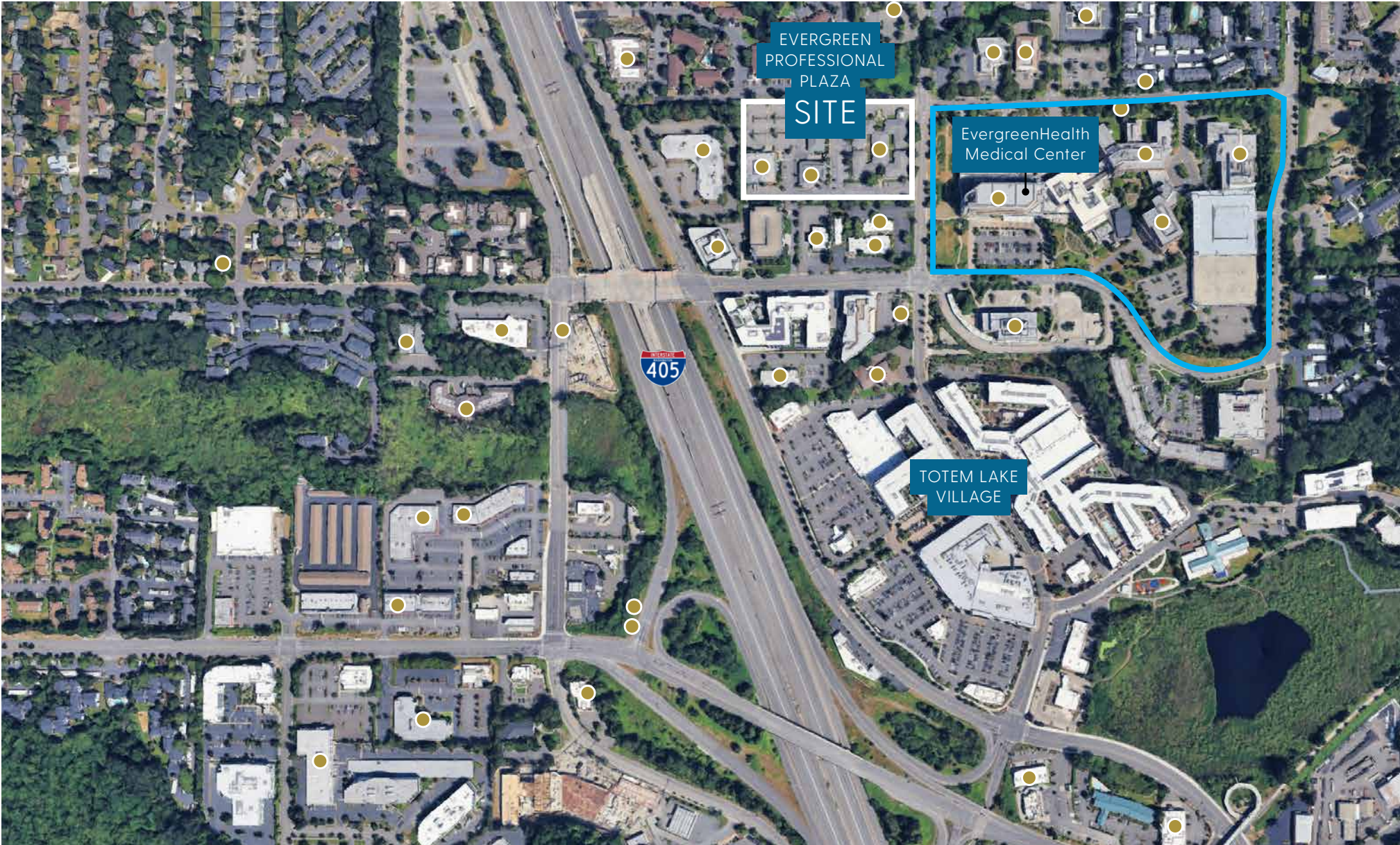
| 2025 DEMOGRAPHICS | 1 MILE | 3 MILE | 5 MILE |
|--------------------------|-----------|-----------|-----------|
| POPULATION | 21,884 | 109,877 | 259,922 |
| HOUSEHOLDS | 9,199 | 44,297 | 105,229 |
| AVERAGE HOUSEHOLD INCOME | \$166,853 | \$210,283 | \$217,202 |
| DAYTIME EMPLOYEES | 31,616 | 119,600 | 272,218 |



EVERGREEN PROFESSIONAL PLAZA

 **MEDICAL SERVICES**

Located in the heart of Kirkland's densely populated medical market.



THE INFORMATION CONTAINED HEREIN HAS BEEN GIVEN TO US BY THE OWNER OF THE PROPERTY OR OTHER SOURCES WE DEEM RELIABLE. WE HAVE NO REASON TO DOUBT ITS ACCURACY, BUT WE DO NOT GUARANTEE IT. ALL INFORMATION SHOULD BE VERIFIED PRIOR TO PURCHASE OR LEASE. SITE PLANS ARE NOT TO SCALE. MAP INFORMATION AND MERCHANTS SHOWN ARE SUBJECT TO CHANGE.