

Retail  
Available

Suite 140: 1,675 RSF Retail



1520 Wilmington Drive

DUPONT, WA 98327

**Mixed use center in the heart of Dupont's commercial core near Joint Base Lewis-McChord**

- » Seven minutes from the proposed Village Development at The Home Golf Course (to include 2,000+ Residences)
- » Proximity to major highways (I-5) provides easy access to Seattle, Tacoma, and Olympia.
- » Strong visibility from Wilmington Drive with sign potential
- » Demographics include a mix of young professionals, military personnel, and families

ALEX VLASKI  
425.505.2700  
alexv@jshproperties.com

 JSH | PROPERTIES, INC.

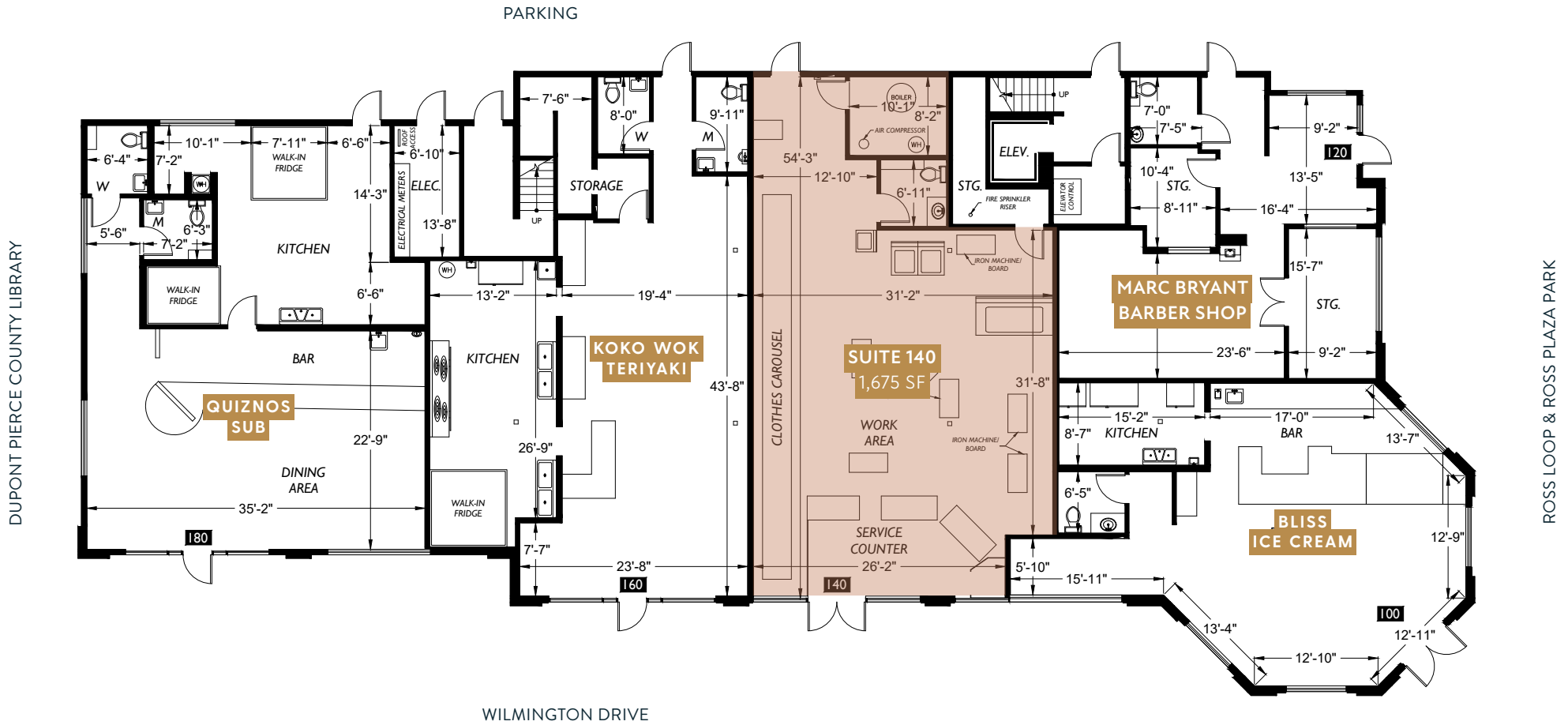


Suite 140: 1,675 RSF  
(former dry cleaner)  
\$27.00 PSF, NNN



# Available 1st Floor Retail

Suite 140: 1,675 RSF Retail (former dry cleaner), \$27.00 PSF, NNN

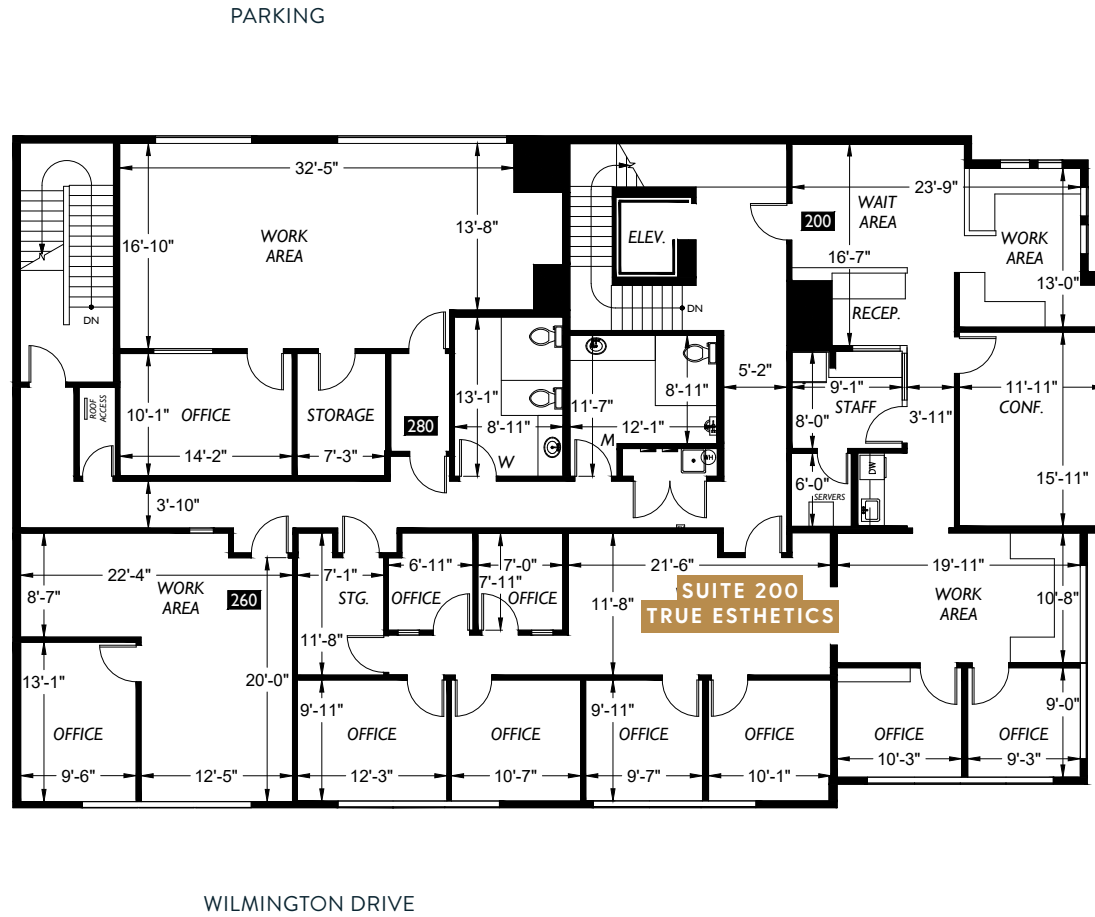


# 2nd Floor Office

Suite 200: True Esthetics

DUPONT PIERCE COUNTY LIBRARY

ROSS LOOP & ROSS PLAZA PARK



# DEMOGRAPHICS ~ 5 MILE RADIUS

## KEY FACTS



38,663

Population



25.5

Median Age



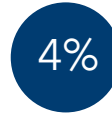
2.9

Average Household Size



\$110,512

2023 Average Household Income (Esri)



4%

No High School Diploma

## EDUCATION



20%

High School Graduate



38%

Some College



38%

Bachelor's/Grad/Prof Degree

## EMPLOYMENT



70%

White Collar



18%

Blue Collar



12%

Services

## BUSINESS



535

Total Businesses



11,020

Total Employees

## ANNUAL HOUSEHOLD SPENDING



\$2,443

Apparel & Services



\$291

Computers & Hardware



\$4,072

Eating Out



\$2,993

Travel



\$73

Theatre/Operas/Concerts



\$72

Movies/Museums/Parks



\$7,140

Groceries



\$6,952

Health Care



\$71

Sports Events



\$10

Online Games

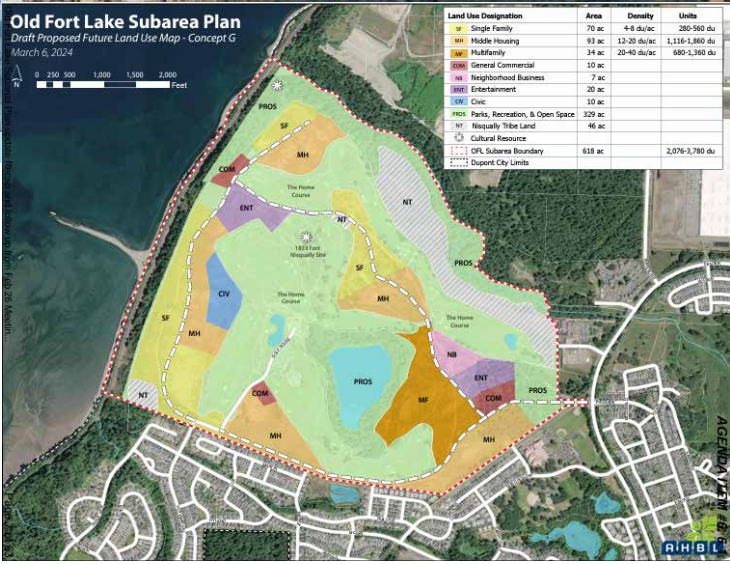
## ANNUAL LIFESTYLE SPENDING



2024 DEMOGRAPHICS	1 MILE	3 MILE	5 MILE
Population	4,879	19,784	38,663
Daytime Population	3,711	17,311	57,081
Households	1,977	5,413	10,771
Avg. HH Income	\$122,467	\$119,834	\$110,512
Median Age	33.8	25.0	25.5

The city of DuPont is proposing a new village around The Home Golf Course with more than 2,000 new homes in addition to new hiking trails, businesses and entertainment venues. A development plan expected to be approved later this year would add a mix of up to 560 single-family dwelling units, up to 1,860 middle-housing dwelling units and up to 1,360 multifamily dwelling units on the site. That's in addition to a proposed 17 acres of commercial and neighborhood businesses, 20 acres of entertainment businesses and 10 acres of civic building.

Source: <https://www.theolympian.com>



THE INFORMATION CONTAINED HEREIN HAS BEEN GIVEN TO US BY SOURCES WE DEEM RELIABLE. WE HAVE NO REASON TO DOUBT ITS ACCURACY. BUT WE DO NOT GUARANTEE IT. ALL INFORMATION SHOULD BE VERIFIED PRIOR TO PURCHASE OR LEASE. SITE PLANS ARE NOT TO SCALE.

# Dupont Commercial Core



THE INFORMATION CONTAINED HEREIN HAS BEEN GIVEN TO US BY SOURCES WE DEEM RELIABLE. WE HAVE NO REASON TO DOUBT ITS ACCURACY, BUT WE DO NOT GUARANTEE IT. ALL INFORMATION SHOULD BE VERIFIED PRIOR TO PURCHASE OR LEASE. SITE PLANS ARE NOT TO SCALE.

1520 WILMINGTON RETAIL/OFFICE FOR LEASE | 7 |

JSHPROPERTIES.COM