

1,371 SF
RETAIL SPACE AVAILABLE



25 CENTRAL WAY
AT MARINA PARK

25 Central Way, Kirkland, WA, 98033

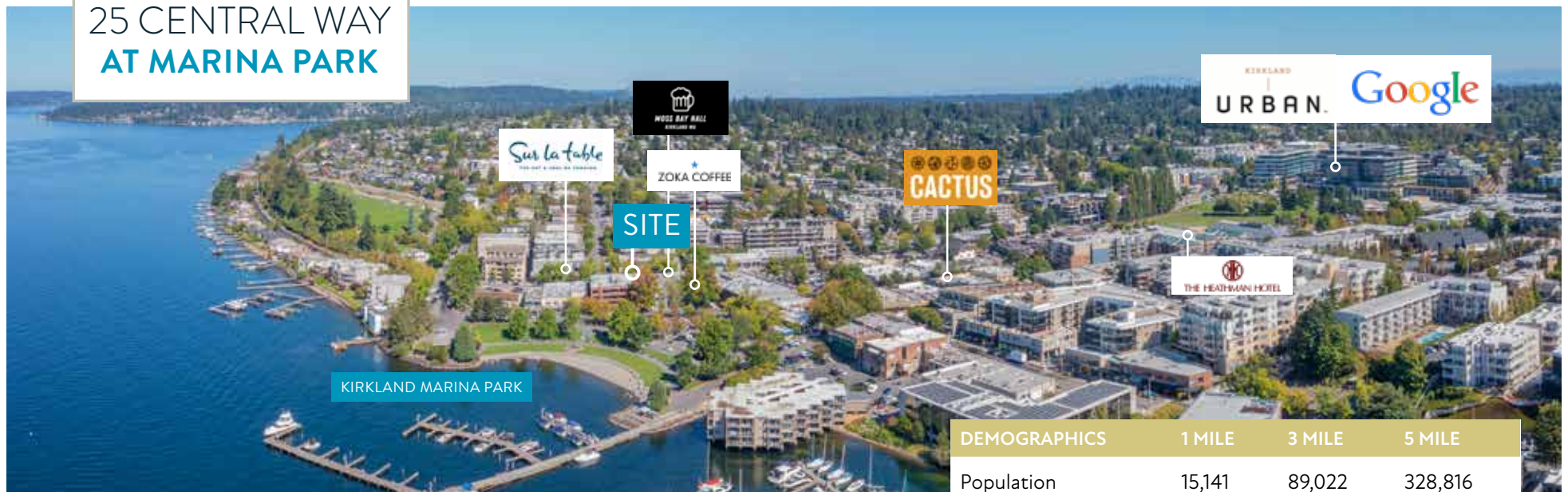
Located in the most vibrant retail hub of Downtown Kirkland on the shores of Lake Washington. Steps from Marina Park and surrounded by trendy boutiques, art galleries, lakeside restaurants and cafes. This walkable village draws the area's tech workforce, locals, and beachtown visitors. Google's corporate offices reside a few blocks east at Kirkland Urban and 6th Street Campus. The retail core is also supported by the plethora of luxury multi-family developments.

ALEX VLASKI
425.505.2700
alexv@jshproperties.com

AARON BENNETT
206.859.4500
aaronb@jshproperties.com

 **JSH | PROPERTIES, INC.**

25 CENTRAL WAY AT MARINA PARK



DEMOGRAPHICS	1 MILE	3 MILE	5 MILE
Population	15,141	89,022	328,816
Daytime Population	15,141	95,271	403,453
Households	7,489	36,920	136,262
Average HH Income	\$211,965	\$222,025	\$212,742

25 CENTRAL WAY AT MARINA PARK

AVAILABLE	RSF	BASE RENT	NNN EST./SF	FEATURES
-----------	-----	-----------	-------------	----------

Suite 240

1,371

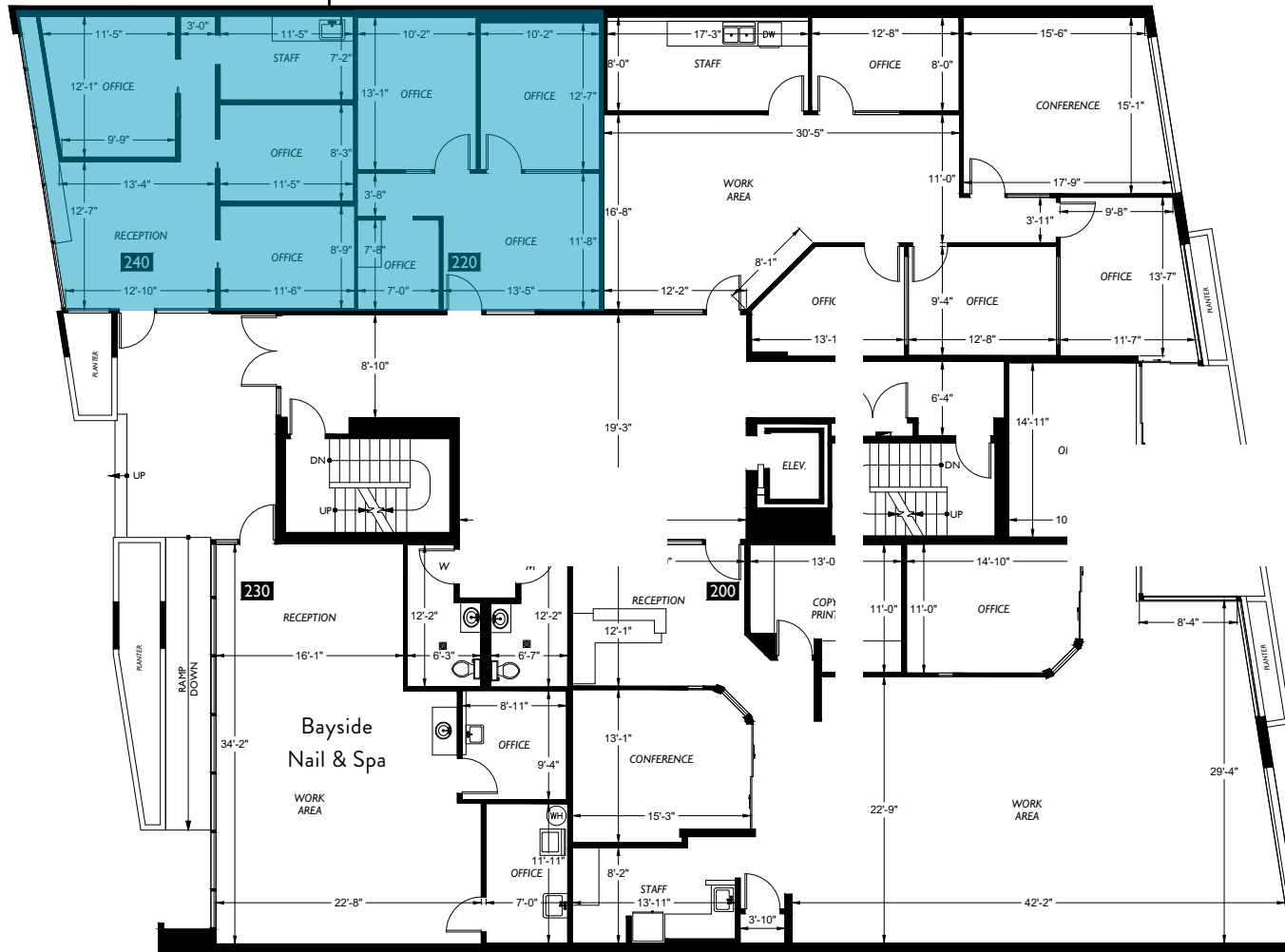
\$45.00

\$16.02

NNN includes all utilities.
Ideal for service, wellness, gift, pet
Expansive storefront windows

Available - Suite 240
1,371 RSF

Central Way



Marina Park / Parking

DEMOGRAPHICS ~ 1 MILE RADIUS

KEY FACTS



15,141

Population



41.9

Median Age



2.0

Average
Household Size



\$211,965

2023 Average
Household Income
(Esri)



No High
School
Diploma



10%

High School
Graduate



15%

Some College



74%

Bachelor's/Grad/Pro
f Degree

EMPLOYMENT



88%

White Collar



5%

Blue Collar



7%

Services



1,048

Total Businesses



10,482

Total Employees

BUSINESS

ANNUAL HOUSEHOLD SPENDING



\$4,358

Apparel &
Services



\$512

Computers &
Hardware



\$7,341

Eating Out



\$5,871

Travel



\$157

Theatre/Operas/
Concerts



\$117

Movies/Museums/
Parks



\$13,105

Groceries



\$12,692

Health Care



\$142

Sports Events



\$17

Online Games

ANNUAL LIFESTYLE SPENDING



25 CENTRAL WAY
AT MARINA PARK