



BALLARD  
ON THE PARK



Retail Available | 675 SF + 300 SF Patio  
Below 268 Modern Apartments in Downtown Ballard

2230 Northwest 57th Street Seattle, WA 98107

ALEX VLASKI  
425.505.2700  
alexv@jshproperties.com

AARON BENNETT  
425.455.0500  
aaronb@jshproperties.com

 JSH | PROPERTIES, INC.





675 SF + 300 SF Patio  
Retail Available Below  
268 Luxury Apartments in Ballard

Located two blocks from Market Street and walking distance to Ballard Sunday Farmers Market and Ballard Locks.

Anchored by  
45,000 SF QFC

Across the street from Banner  
Bank, Bartell Drugs and Ballard  
Branch, Seattle Public Library



Dedicated  
Visitor  
Parking



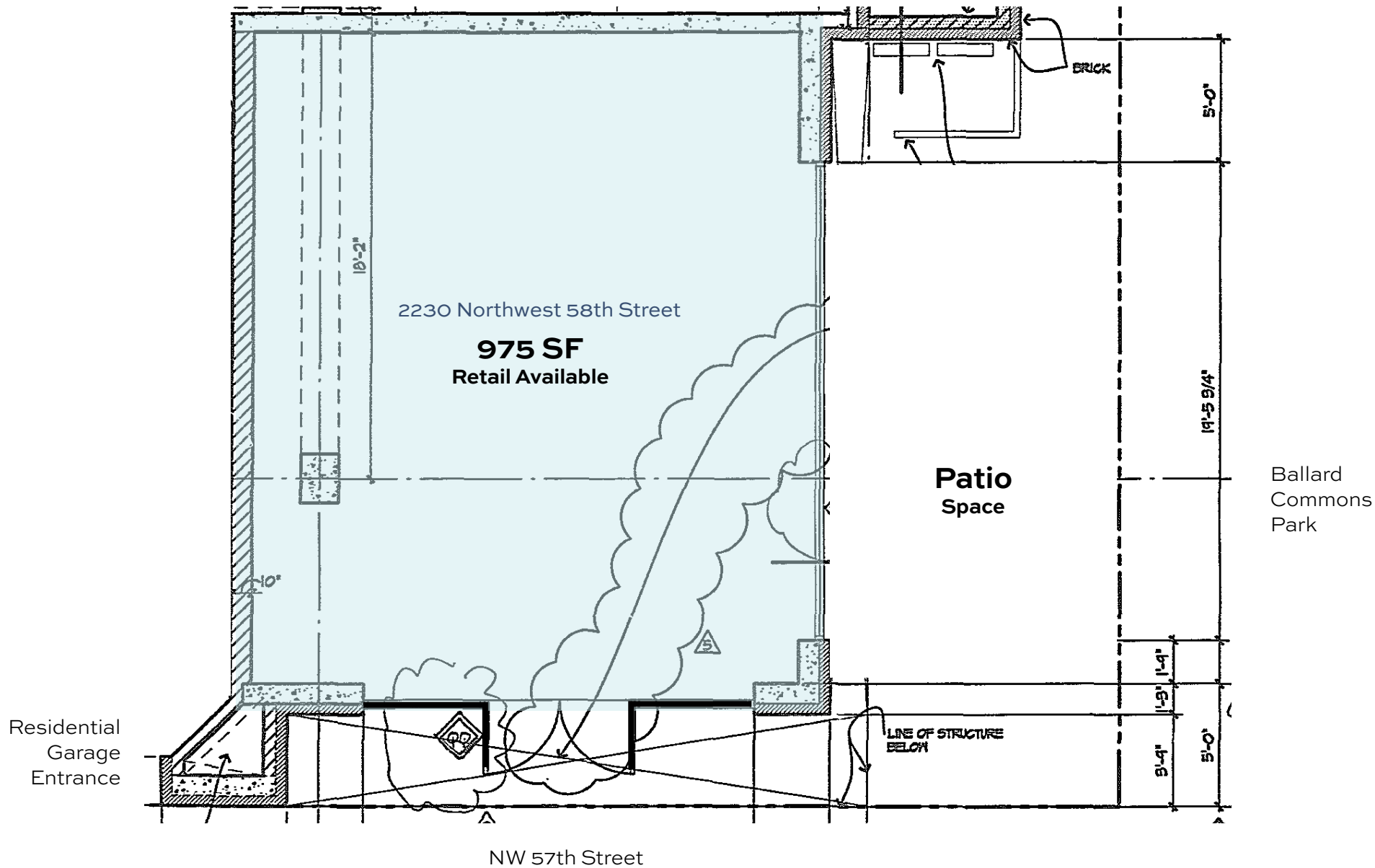
268  
Residential  
Units Onsite



Patio  
Seating  
Available

# Ballard on the Park Retail

AVAILABLE	RSF	BASE RENT	NNN EST./SF
RETAIL	675 SF + 300 SF Patio	\$25.00	\$3.80



THE INFORMATION CONTAINED HEREIN HAS BEEN GIVEN TO US BY SOURCES WE DEEM RELIABLE. WE HAVE NO REASON TO DOUBT ITS ACCURACY, BUT WE DO NOT GUARANTEE IT. ALL INFORMATION SHOULD BE VERIFIED PRIOR TO PURCHASE OR LEASE. SITE PLANS AND MAPS ARE NOT TO SCALE.





## Ballard on the Park Walk Score

98

WALKER'S  
PARADISE

88

VERY  
BIKEABLE

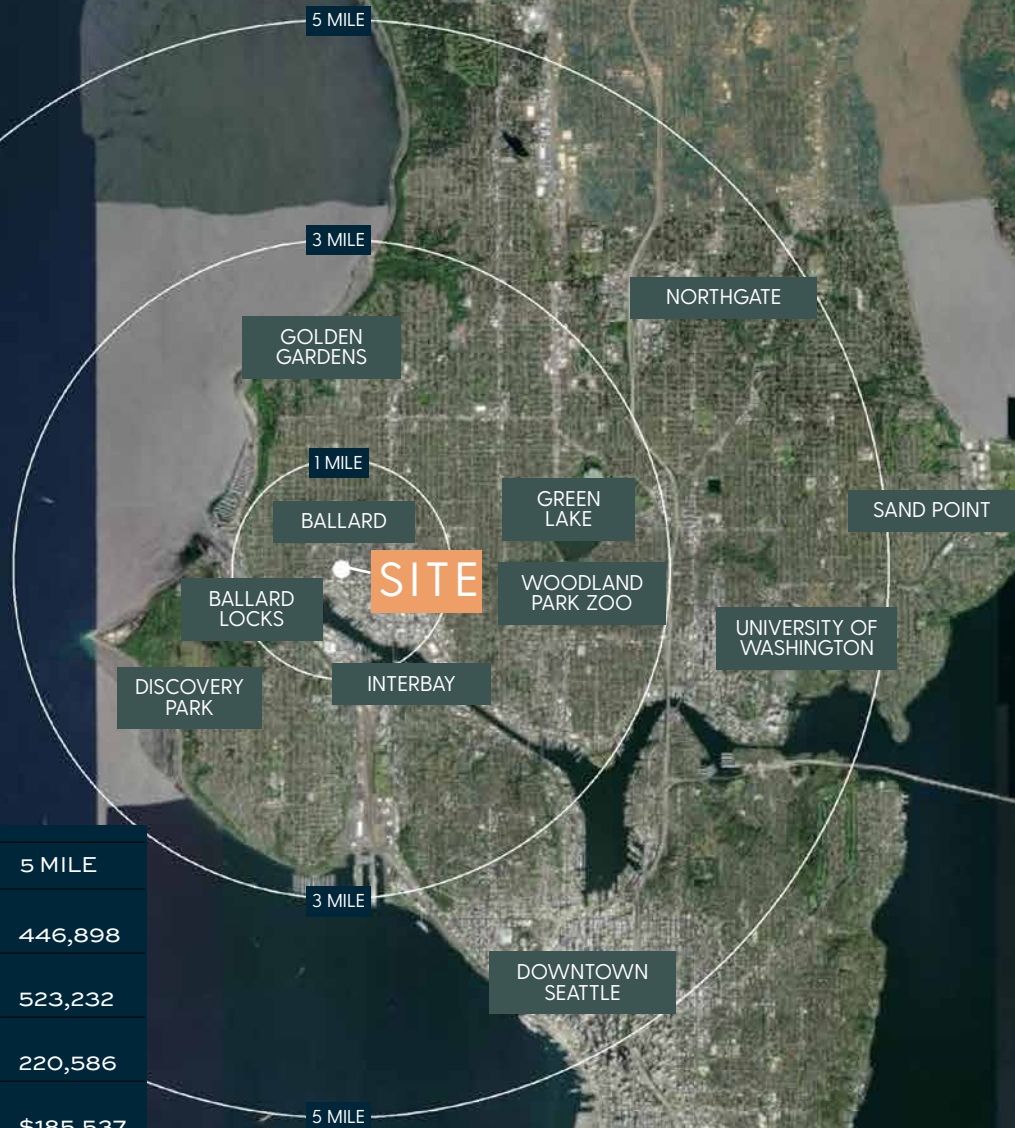
51

GOOD  
TRANSIT

Positioned in the heart of Seattle's vibrant Ballard neighborhood. This 675 SF retail location at Ballard on the Park Apartments right next to Ballard Commons Park offers access to a dense and affluent customer base with approximately 35,945 residents within a one-mile radius and an average household income of \$203,001. Ballard's walkable streets, diverse mix of local businesses, and strong community engagement further enhance its appeal, making it an ideal setting for visibility and growth in one of Seattle's most dynamic urban environments.



# Demographics



2025 DEMOGRAPHICS	1 MILE	3 MILE	5 MILE
Population	35,945	184,626	446,898
Daytime Population	36,541	161,728	523,232
Households	18,461	85,189	220,586
Avg. HH Income	\$203,001	\$209,650	\$185,537

