

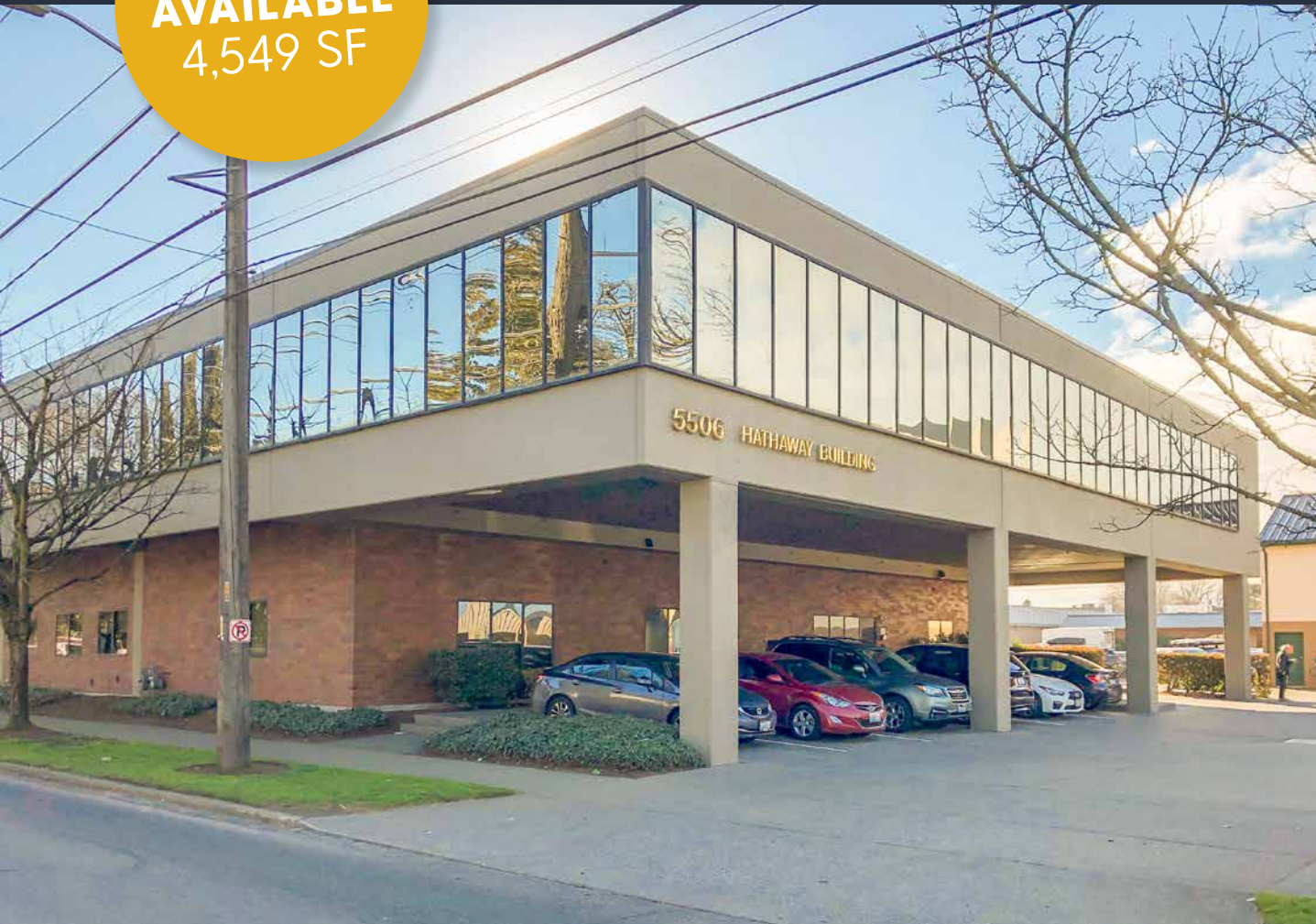


5506 HATHAWAY BUILDING

GEORGETOWN OFFICE SPACE AVAILABLE

5506 Sixth Avenue S Seattle WA 98108

OFFICE SPACE
AVAILABLE
4,549 SF

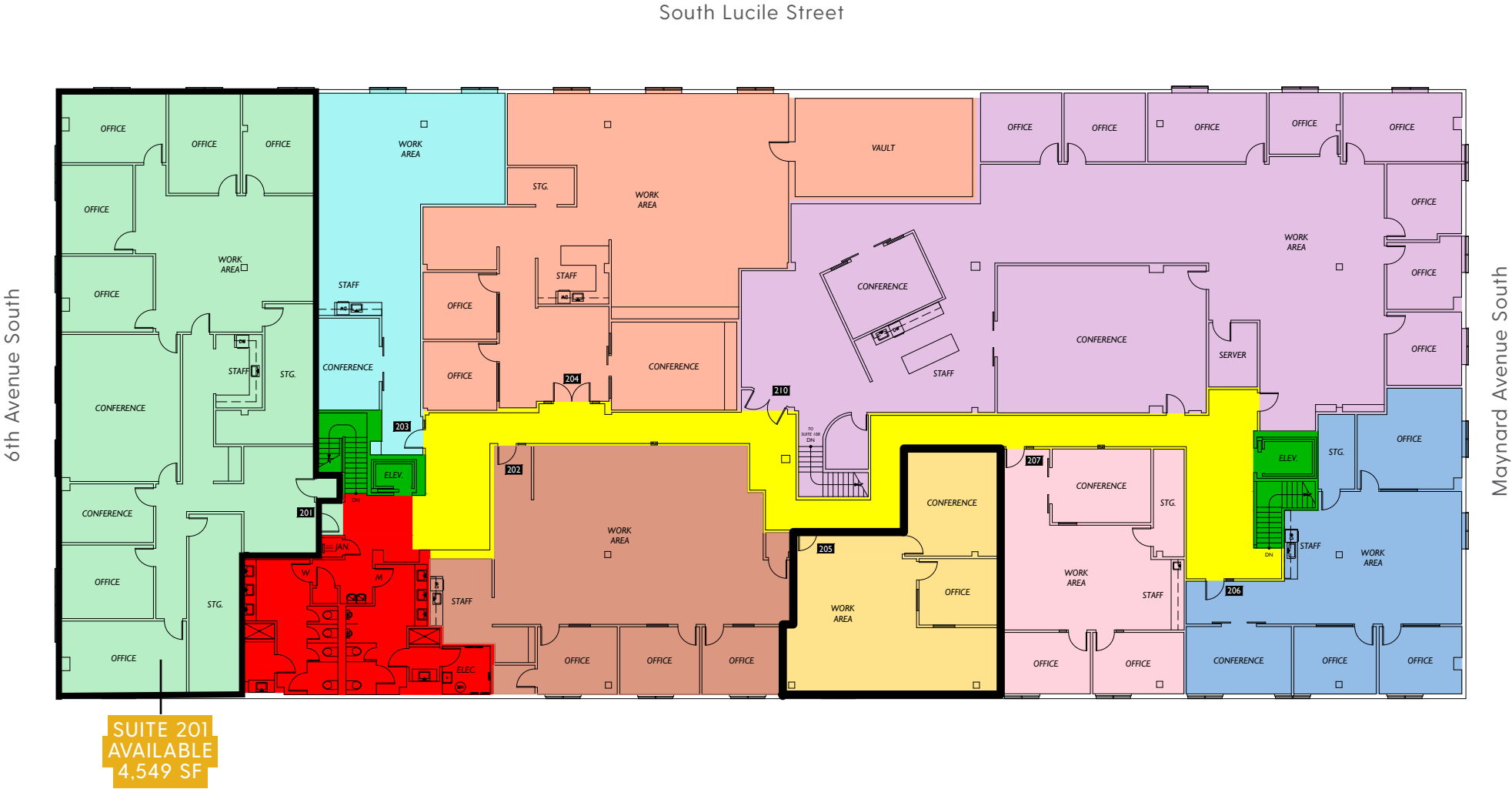


OWNER/AGENT
STEPHEN J HANSEN
425.283.5450
steveh@jshproperties.com

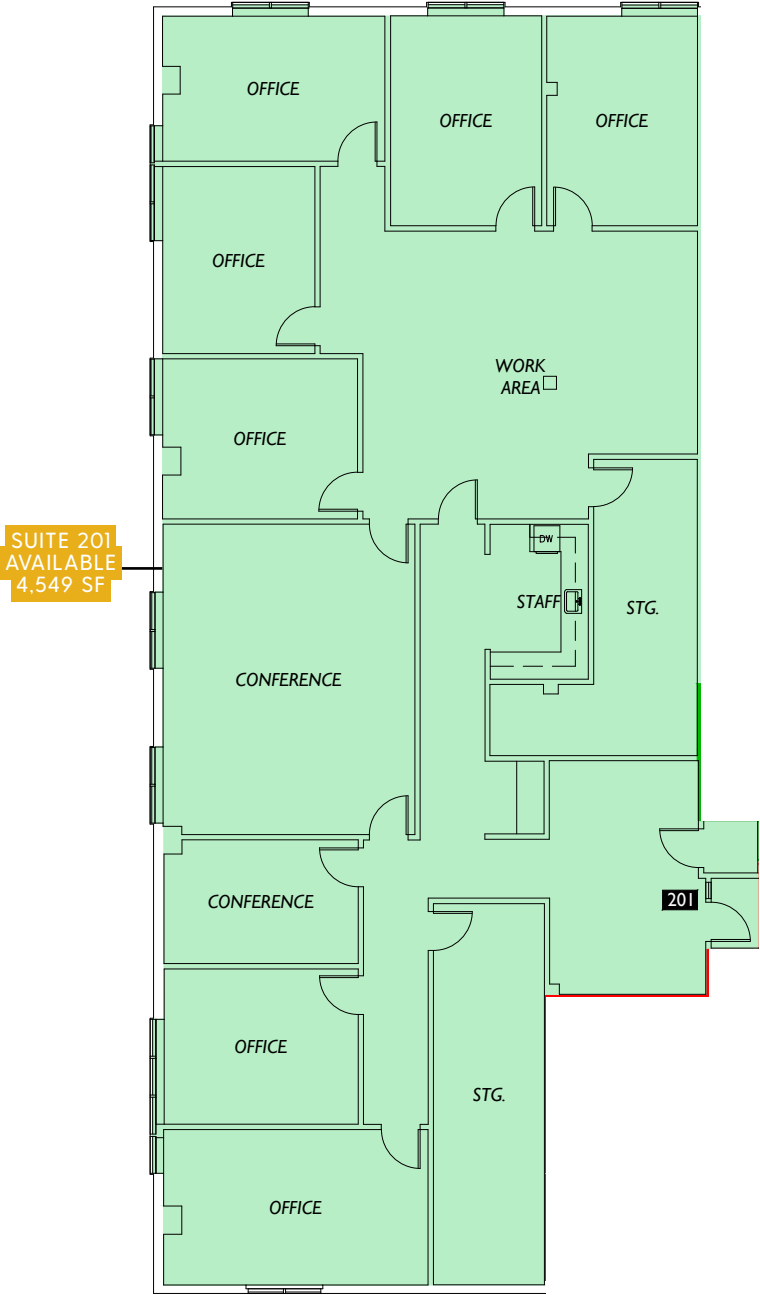
 JSH | PROPERTIES, INC.

HATHAWAY BUILDING - 2ND FLOOR OFFICE SPACE
5506 SIXTH AVENUE S - SEATTLE WA 98108

AVAILABLE	RSF	BASE RENT	NNN	
SUITE 201	4,549	\$24.00/SF	\$7.53	Open workspace, conference room, private offices



HATHAWAY BUILDING - 2ND FLOOR OFFICE SPACE
5506 SIXTH AVENUE S - SEATTLE WA 98108





HATHAWAY BUILDING is located in the heart of the Design District in Georgetown, just south of Downtown Seattle, and within a few blocks of Georgetown Squared, Seattle Design Center, USPS, Daltile, & McKinstry.

Interior designers, artists, workrooms, and architects enjoy convenient access to international architectural design brands such as Trammell-Gagne, and Jennifer West. Georgetown's Art Walk happens every second Saturday of the year.

Quick access to I-5 and Highway 99. Offering surface lot and street parking, the Hathaway Building is located within walking distance to several lunch hot spots and is a ten minute drive or bus ride to Downtown Seattle and Boeing.



