

BALLARD ON THE PARK



675 SF of Retail Available Below
268 Modern Apartments in Downtown Ballard

2233 Northwest 58th Street Seattle, WA 98107

ALEX VLASKI
425.505.2700
alexv@jshproperties.com

AARON BENNETT
425.455.0500
aaronb@jshproperties.com

 JSH | PROPERTIES, INC.



675 SF of Retail Available Below 268 Luxury Apartments in Ballard

Located two blocks from Market Street and walking distance
to Ballard Sunday Farmers Market and Ballard Locks.

Anchored by
45,000 SF QFC

Across the street from **Banner
Bank, Bartell Drugs and Ballard
Branch, Seattle Public Library**



Dedicated
Visitor
Parking

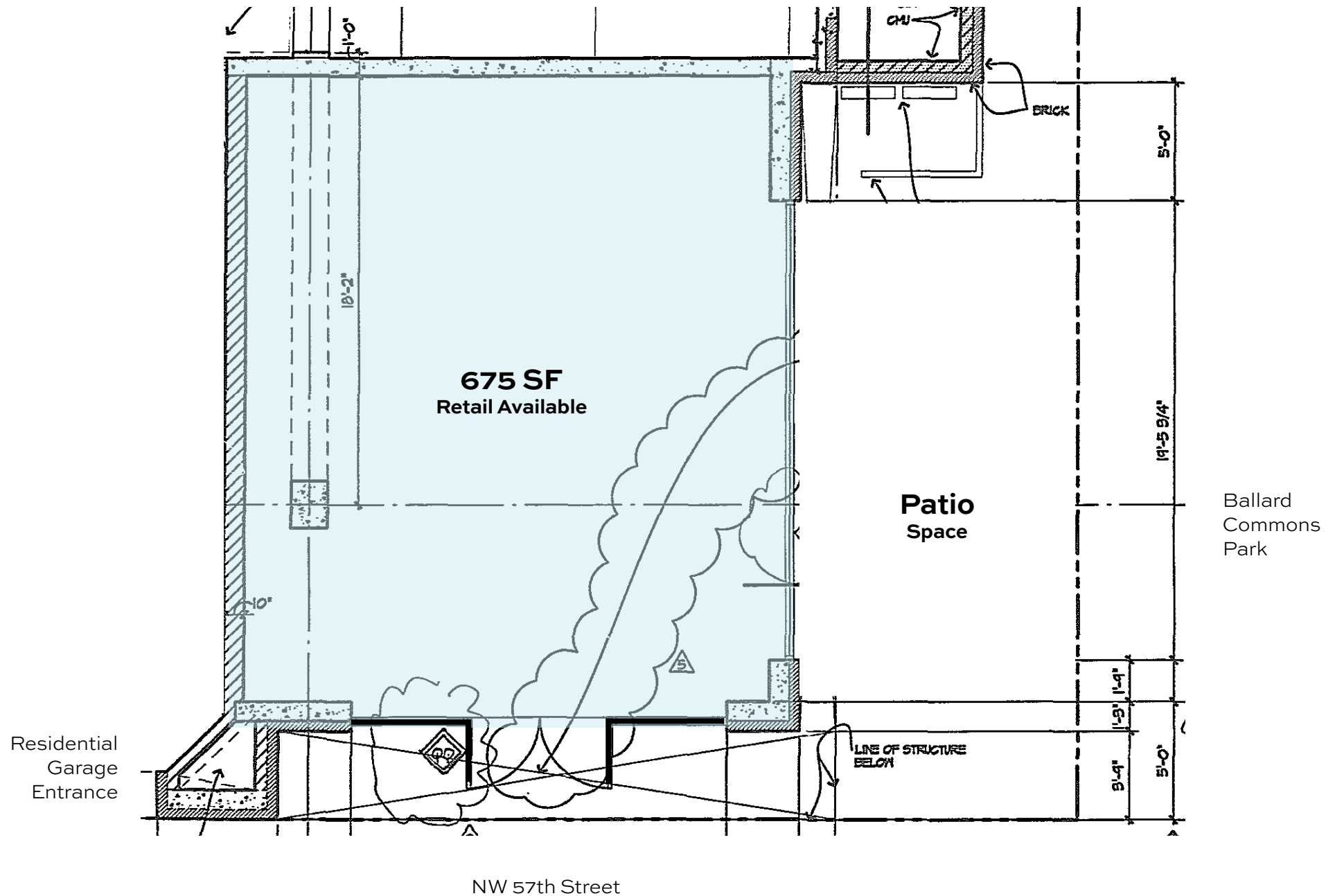


268
Residential
Units Onsite



Patio
Seating
Available

Ballard on the Park Retail





Ballard on the Park Walk Score

98

WALKER'S
PARADISE

88

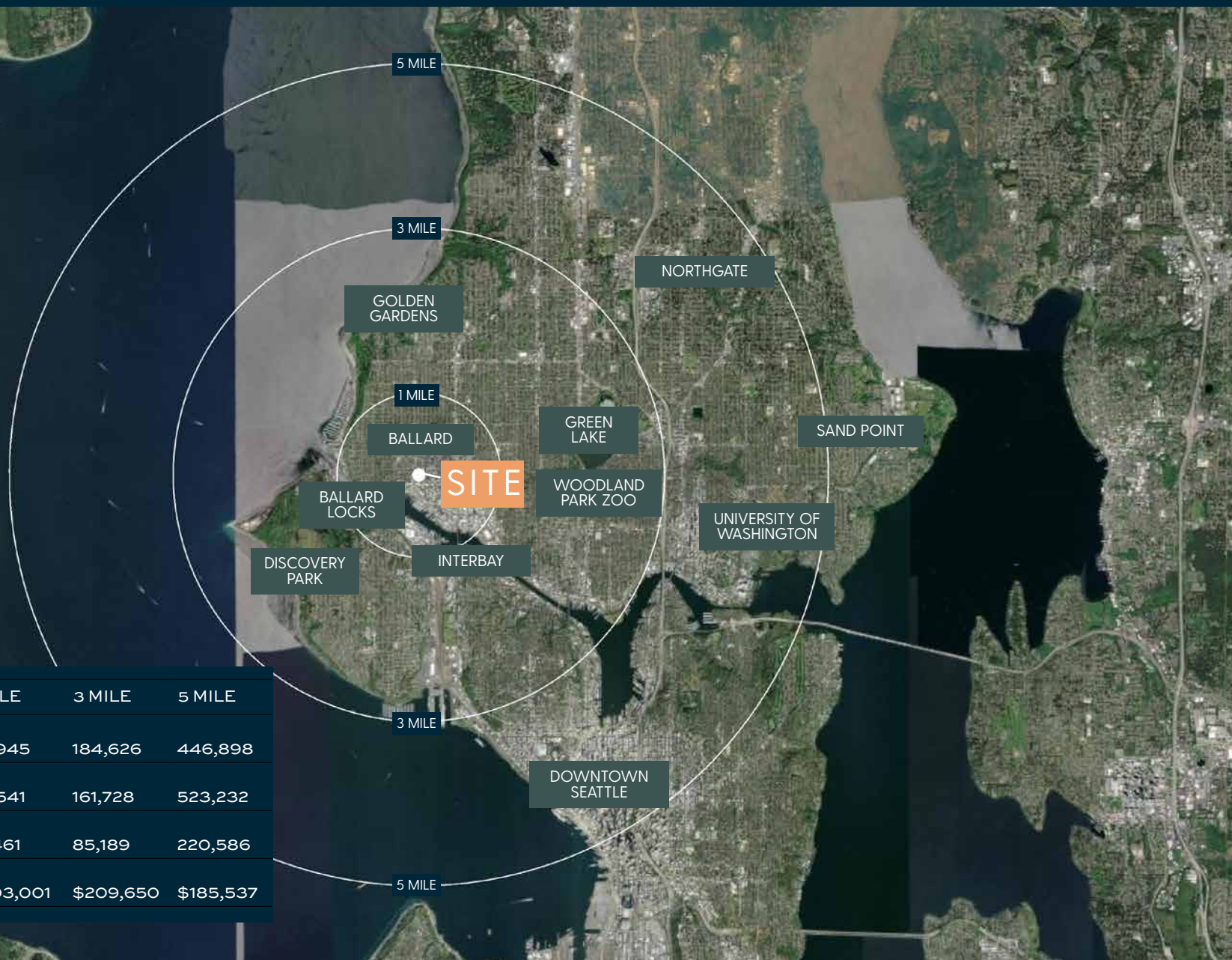
VERY
BIKEABLE

51

GOOD
TRANSIT

Positioned in the heart of Seattle's vibrant Ballard neighborhood. This 675 SF retail location at Ballard on the Park Apartments right next to Ballard Commons Park offers access to a dense and affluent customer base with approximately 35,945 residents within a one-mile radius and an average household income of \$203,001. Ballard's walkable streets, diverse mix of local businesses, and strong community engagement further enhance its appeal, making it an ideal setting for visibility and growth in one of Seattle's most dynamic urban environments.

Demographics



2025 DEMOGRAPHICS	1 MILE	3 MILE	5 MILE
Population	35,945	184,626	446,898
Daytime Population	36,541	161,728	523,232
Households	18,461	85,189	220,586
Avg. HH Income	\$203,001	\$209,650	\$185,537

