

~~\$23.00/SF, NNN~~
Ownership open to all
reasonable offers to lease!

Kitsap Mall Blvd

13,364 SF RETAIL FOR LEASE FORMER GREAT FLOORS

3200 NW Randall Way, Silverdale, WA 98383 | KITSAP PENINSULA

CHAD WALDBAUM, ccim
425.531.7098
chadw@jshproperties.com

 **JSH | PROPERTIES, INC.**

THE INFORMATION CONTAINED HEREIN HAS BEEN GIVEN TO US BY SOURCES WE DEEM RELIABLE, WE HAVE NO REASON TO DOUBT ITS ACCURACY, BUT WE DO NOT GUARANTEE IT. ALL INFORMATION SHOULD BE VERIFIED PRIOR TO PURCHASE OR LEASE.

JSHPROPERTIES.COM

- Adjacent to Target and Kitsap Mall Entrance
- 25K VPD directly off Highway 3
- Within 3 miles of Kitsap Naval Base (employs 31k)
- In Kitsap Peninsula's retail core



STRONG VISIBILITY FROM TARGET NEXTDOOR



25,272 VEHICLES PER DAY ON KITSAP MALL BOULEVARD

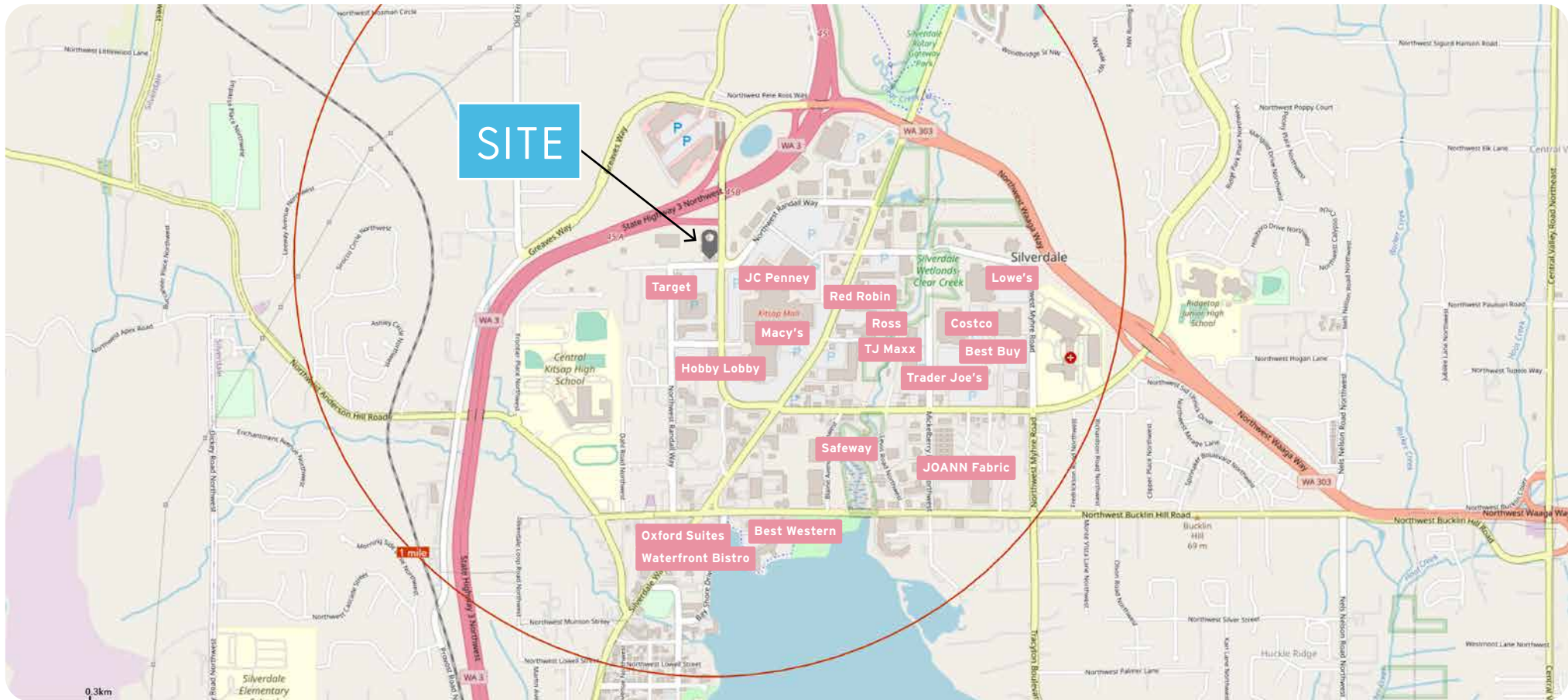


PARKING & LOADING AREA



ACROSS THE STREET FROM KITSAP MALL

SILVERDALE - FORMER GREAT FLOORS RETAIL FOR LEASE | 2 |



Serving Kitsap Peninsula in Silverdale, Washington, this retail site features outstanding visibility and sits directly off Highway 3 on Kitsap Mall Boulevard at the entrance to the Kitsap Peninsula's largest retail sector. Area retail/hospitality includes: Kitsap Mall, Silverdale Plaza, Kitsap Mall Plaza, Silverdale Shopping Center, Best Western Hotel, Oxford Suites & Waterfront Bistro. Three miles North, Kitsap Naval Base employs over 31,000 military and civilian personnel, and contractors. Kitsap's idyllic setting and close proximity to the metro Seattle area makes tourism one of Kitsap County's top economic drivers, with destination-worthy wedding venues, resorts, conference centers, golf courses and casinos.

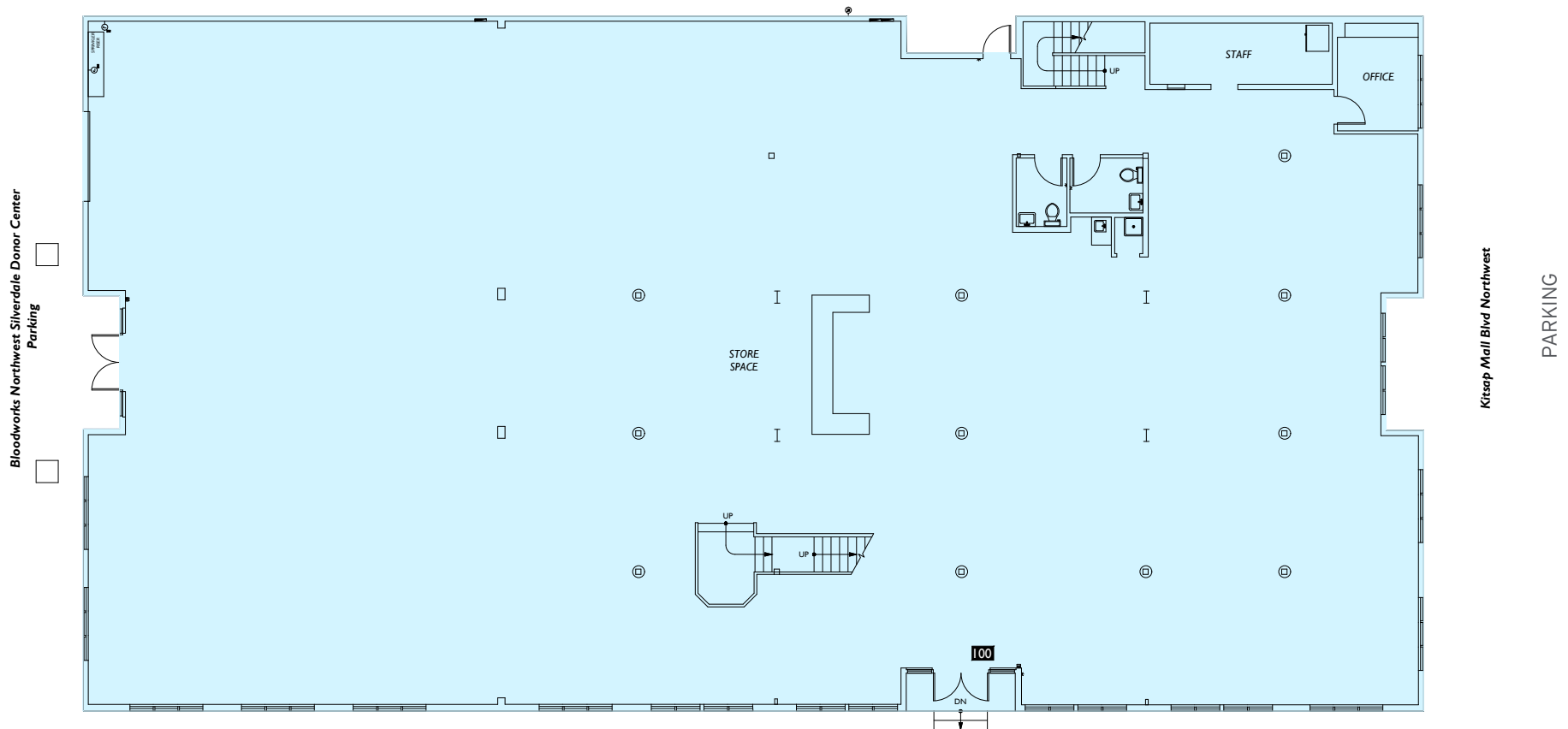
SILVERDALE - FORMER GREAT FLOORS RETAIL FOR LEASE | 3 |

Kitsap Mall Blvd Retail

RETAIL AVAILABLE - FORMER GREAT FLOORS

RSF	ASKING RENT	COMMENTS
13,364 SF	\$23.00/SF, NNN BRING ALL REASONABLE OFFERS TO LEASE	13,364 SF Total (2,587 SF Mezzanine - Floor plan on next page) Right off Highway 3 & Kitsap Mall Blvd NW

PARKING



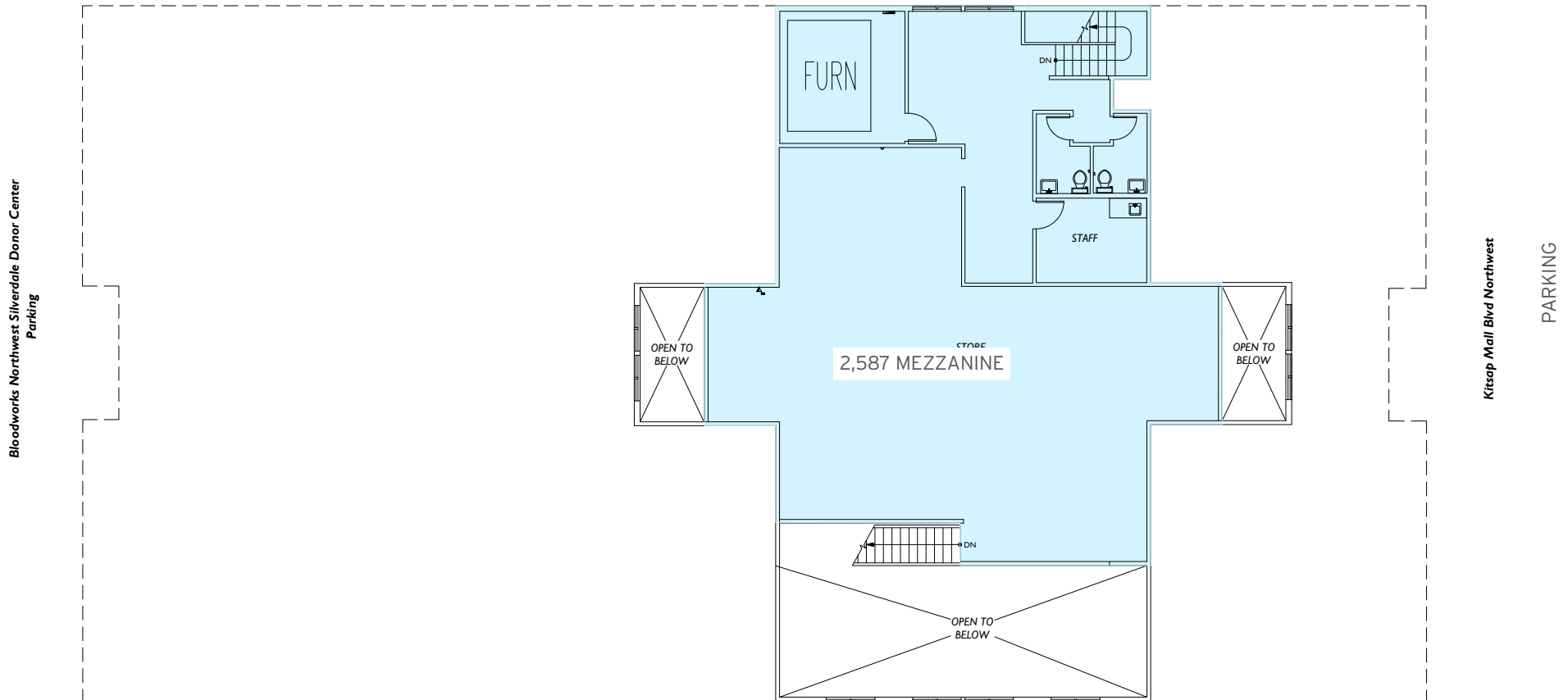
SILVERDALE - FORMER GREAT FLOORS RETAIL FOR LEASE | 4 |

Kitsap Mall Blvd Retail

RETAIL AVAILABLE - FORMER GREAT FLOORS

RSF	ASKING RENT	COMMENTS
13,364 SF	\$23.00/SF, NNN BRING ALL REASONABLE OFFERS TO LEASE	13,364 SF Total (2,587 SF Mezzanine - Floor plan on next page) Right off Highway 3 & Kitsap Mall Blvd NW

PARKING



SILVERDALE - FORMER GREAT FLOORS RETAIL FOR LEASE | 5 |

Kitsap County

Silverdale is located in Kitsap County, an integral part of the dynamic, global Greater Seattle regional economy; and, a leader in several key industries in the region, both legacy and emerging sectors, including: Defense, Maritime, Manufacturing, Technology, Healthcare and Tourism. Kitsap Naval Base employs over 31,000 military and civilian personnel, in addition to defense contractor operations. Kitsap residents and tourists enjoy over 250 miles of scenic saltwater coastline. The median age of residents within 3 miles is 36. Households in this area spend 9% more on housing, food, apparel, transportation and entertainment than the average US household.

2024 DEMOGRAPHICS

	1 MILES	3 MILES	5 MILES
Population	3,530	38,112	74,750
Daytime Population	16,356	44,380	75,712
Households	1,751	13,953	27,500
Avg. Household Income	\$98,514	\$132,944	\$130,214

