

## MEDICAL OFFICE SPACE FOR LEASE

Immediately adjacent to the  
EvergreenHealth Medical Center.

1,164 SF AVAILABLE



# *Evergreen Professional Plaza*

12911 120TH AVENUE NE | KIRKLAND, WA 98034

ALEX VLASKI

206.303.7327

alexv@jshproperties.com

 JSH | PROPERTIES, INC.

jshproperties.com

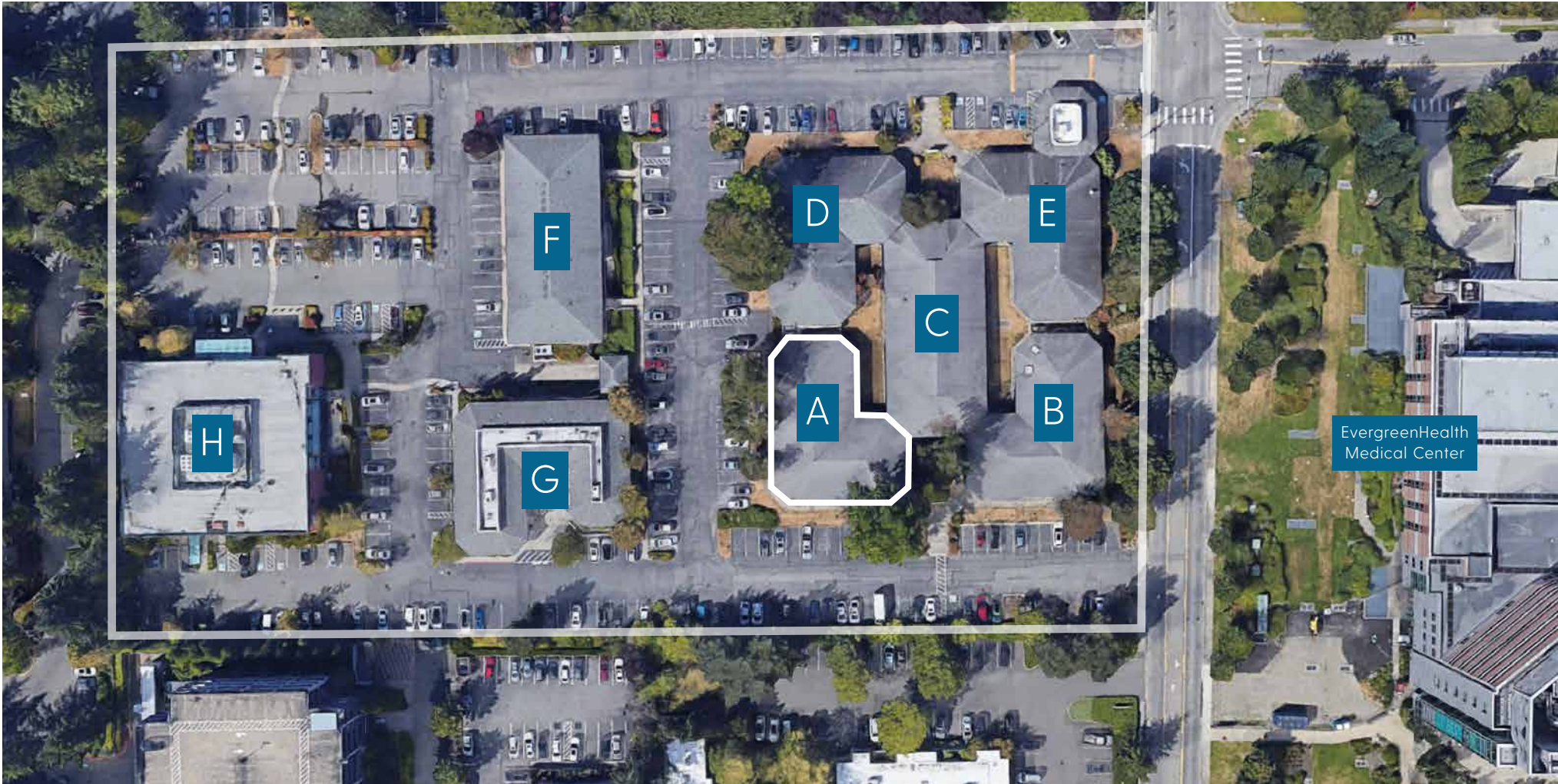


EVERGREEN PROFESSIONAL PLAZA



AVAILABLE	SF	ASKING RENT	
SUITE A50	1,164 SF	\$30.00/SF + NNN	NNN= Approx. \$11.00/sf/yr

*Strong lineup of regional medical professionals with excellent visibility and access.  
Superb location adjacent to Evergreen Hospital and Totem Lake Village*



THE INFORMATION CONTAINED HEREIN HAS BEEN GIVEN TO US BY THE OWNER OF THE PROPERTY OR OTHER SOURCES WE DEEM RELIABLE. WE HAVE NO REASON TO DOUBT ITS ACCURACY, BUT WE DO NOT GUARANTEE IT. ALL INFORMATION SHOULD BE VERIFIED PRIOR TO PURCHASE OR LEASE. SITE PLANS ARE NOT TO SCALE. MAP INFORMATION AND MERCHANTS SHOWN ARE SUBJECT TO CHANGE.





## Property Highlights

- » Located in Totem Lake in Kirkland, just off I-405
- » Immediately adjacent to the EvergreenHealth Medical Center
- » Located in Kirkland's densely populated medical market
- » Neighbors to The Village at Totem Lake, anchored by Whole Foods
- » Eight buildings, consisting of 75,807 SF, built in 1972 and 2003

2024 DEMOGRAPHICS	1 MILE	3 MILE	5 MILE
POPULATION	21,912	108,838	258,672
HOUSEHOLDS	9,207	43,874	104,615
AVERAGE HOUSEHOLD INCOME	\$151,451	\$199,383	\$207,604
DAYTIME EMPLOYEES	31,283	117,852	269,635



Across from  
EvergreenHealth  
Medical Center



EVERGREEN PROFESSIONAL PLAZA

MEDICAL SERVICES

Located in the heart of Kirkland's densely populated medical market.

