



**OFFICE SPACE
AVAILABLE**

1,013 - 14,568 RSF



UW Medicine
NORTHWEST HOSPITAL
& MEDICAL CENTER

site

MERIDIAN AVENUE N

Northway West Building OFFICE SPACE FOR LEASE

10700 Meridian Ave N, Seattle, WA, 98133

ERNIE VELTON
erniev@jshproperties.com
425.283.5471

REESE VELTON
reesev@jshproperties.com
425.283.5484

 **JSH | PROPERTIES, INC.**

7325 166TH AVE NE, SUITE F260, REDMOND, WA 98052
425.455.0500 | www.jshproperties.com

PROPERTY

**10700 MERIDIAN AVE N
SEATTLE, WA, 98133**

- » Sweeping mountain and Puget Sound views
- » Class A office building with easy access to I-5.
- » Within a few blocks of the new Northgate Pedestrian/Bike Bridge over Interstate 5 (I-5) providing easy walking access to Northgate mall, restaurants, Kraken Community Iceplex, and the Northgate light rail station
- » Ample parking
- » Walk score (72) very walkable
- » Minutes from UW Medicine/Northwest Hospital



New Pedestrian & Bike Bridge & Light Rail Station

Photo Credit: North Seattle College

The Northgate neighborhood is a major residential and employment destination that continues to grow. With the completion of Sound Transit's Link light rail station and the John Lewis Memorial Bicycle/Pedestrian Bridge in 2021, the neighborhood is poised to become one of the region's most active transit hubs.

The Northgate Ped/Bike Bridge improves access to communities, thriving job and retail market, services, and opportunities on the east and west sides of I-5 in Northgate and Licton Springs. The new bridge spans roughly 1,900 feet over I-5, landing at North Seattle College on the west side and at 1st Ave NE and NE 100th St, near the Link Light Rail station, on the east side.

THE INFORMATION CONTAINED HEREIN HAS BEEN GIVEN TO US BY THE OWNER OF THE PROPERTY OR OTHER SOURCES WE DEEM RELIABLE. WE HAVE NO REASON TO DOUBT ITS ACCURACY, BUT WE DO NOT GUARANTEE IT. ALL INFORMATION SHOULD BE VERIFIED PRIOR TO PURCHASE OR LEASE.

ERNIE VELTON
erniev@jshproperties.com
425.283.5471

REESE VELTON
reesev@jshproperties.com
425.283.5484

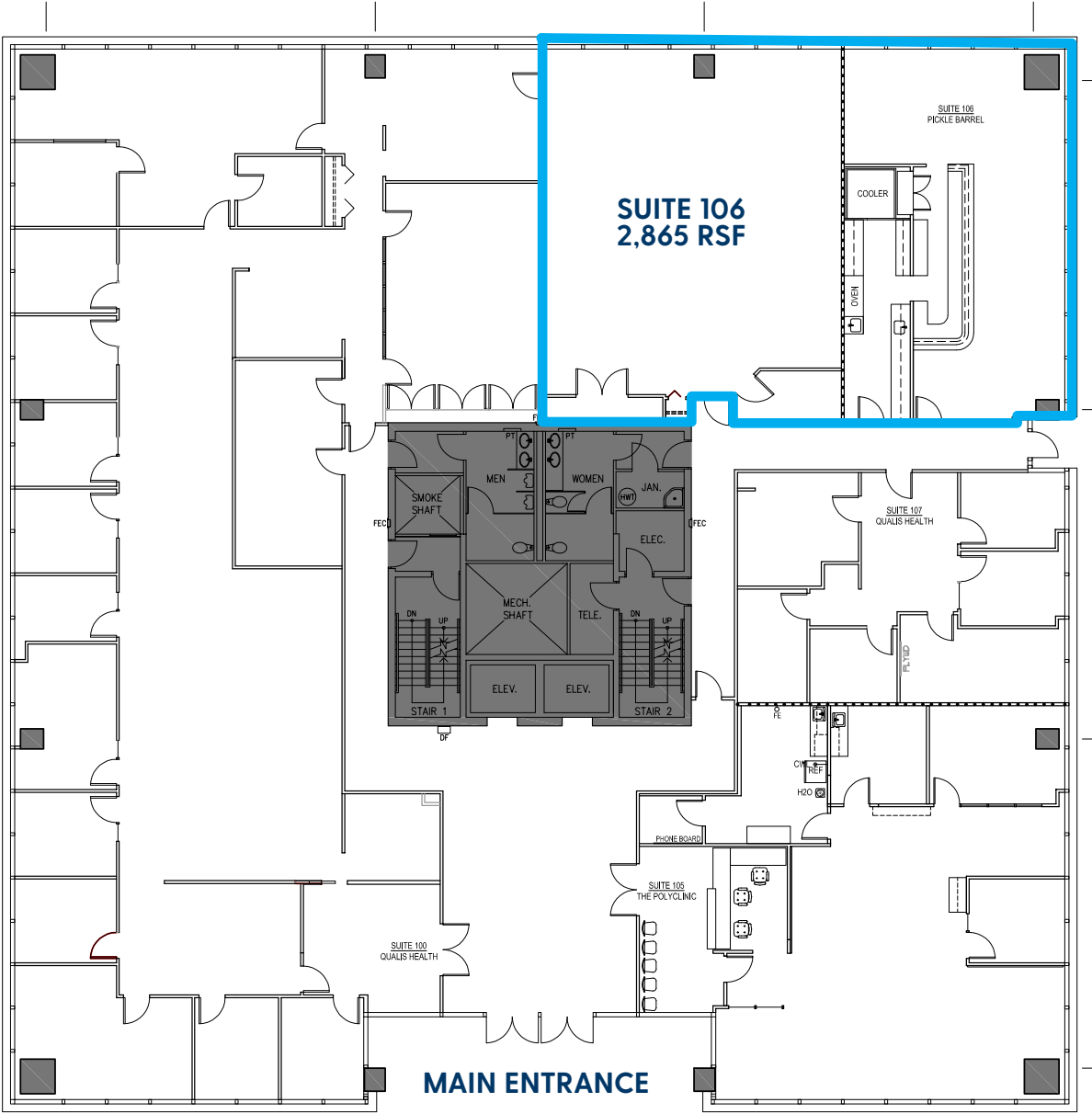
JSH | PROPERTIES, INC.

7325 166TH AVE NE, SUITE F260, REDMOND, WA 98052
425.455.0500 | www.jshproperties.com

NORTHWAY WEST | 1st Floor

1ST FLOOR	RSF	RENT*	
SUITE 106	2,865	\$36.00/sf	Kitchen

*Fully Serviced with Base Year Expense Stop



1 FIRST FLOOR PLAN
1/16" = 1'-0"



THE INFORMATION CONTAINED HEREIN HAS BEEN GIVEN TO US BY THE OWNER OF THE PROPERTY OR OTHER SOURCES WE DEEM RELIABLE. WE HAVE NO REASON TO DOUBT ITS ACCURACY, BUT WE DO NOT GUARANTEE IT. ALL INFORMATION SHOULD BE VERIFIED PRIOR TO PURCHASE OR LEASE.

ERNIE VELTON
erniev@jshproperties.com
425.283.5471

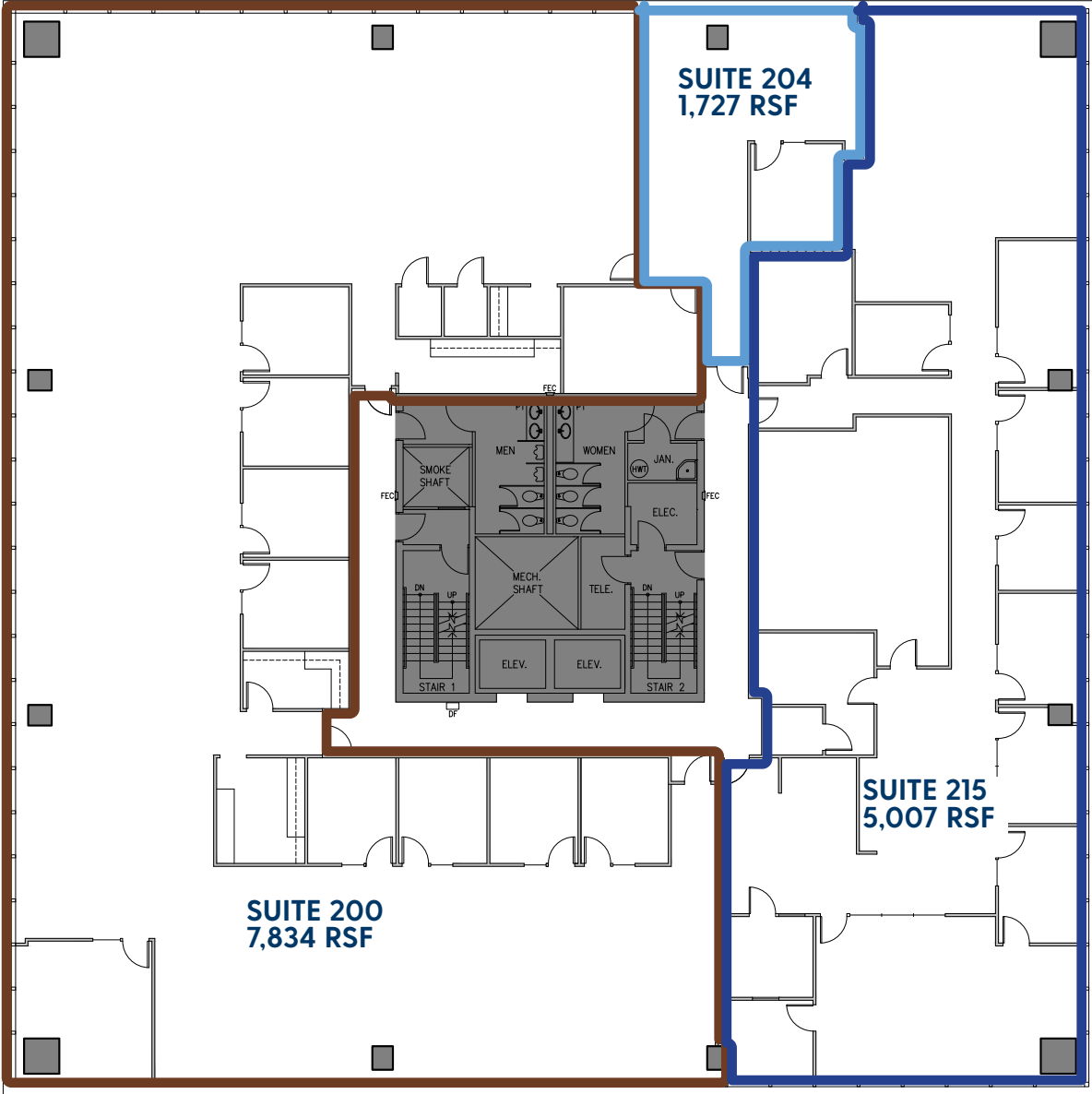
REESE VELTON
reesev@jshproperties.com
425.283.5484

JSH | PROPERTIES, INC.
7325 166TH AVE NE, SUITE F260, REDMOND, WA 98052
425.455.0500 | www.jshproperties.com

NORTHWAY WEST | 2nd Floor

2ND FLOOR	RSF	RENT*
FULL FLOOR	14,568	\$36.00/sf
SUITE 200	7,834	\$36.00/sf
SUITE 204	1,727	\$36.00/sf
SUITE 215	5,007	\$36.00/sf

*Fully Serviced with Base Year Expense Stop



1 SECOND FLOOR PLAN
 3/6 Scale: 1/16" = 1'-0" 0 8'-0" 16'-0" 32'-0"

THE INFORMATION CONTAINED HEREIN HAS BEEN GIVEN TO US BY THE OWNER OF THE PROPERTY OR OTHER SOURCES WE DEEM RELIABLE. WE HAVE NO REASON TO DOUBT ITS ACCURACY, BUT WE DO NOT GUARANTEE IT. ALL INFORMATION SHOULD BE VERIFIED PRIOR TO PURCHASE OR LEASE.

ERNIE VELTON
 erniev@jshproperties.com
 425.283.5471

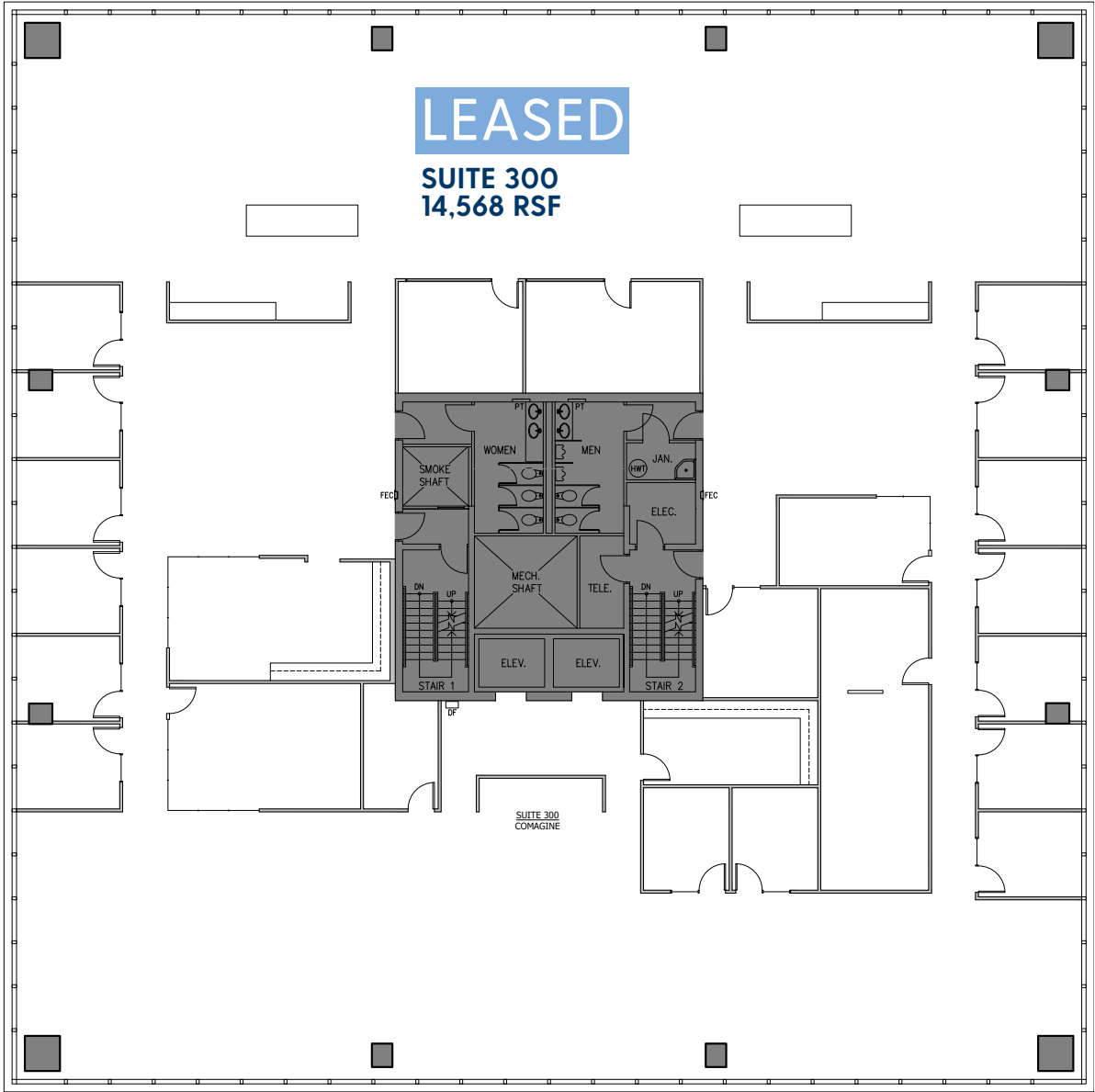
REESE VELTON
 reesev@jshproperties.com
 425.283.5484

JSH | PROPERTIES, INC.
 7325 166TH AVE NE, SUITE F260, REDMOND, WA 98052
 425.455.0500 | www.jshproperties.com

NORTHWAY WEST | 3rd Floor

3RD FLOOR	RSF	RENT*
LEASED	14,568	\$36.00/sf

*Fully Serviced with Base Year Expense Stop



1 THIRD FLOOR PLAN
4/6 Scale: 1/16" = 1'-0"



THE INFORMATION CONTAINED HEREIN HAS BEEN GIVEN TO US BY THE OWNER OF THE PROPERTY OR OTHER SOURCES WE DEEM RELIABLE. WE HAVE NO REASON TO DOUBT ITS ACCURACY, BUT WE DO NOT GUARANTEE IT. ALL INFORMATION SHOULD BE VERIFIED PRIOR TO PURCHASE OR LEASE.

ERNIE VELTON
erniev@jshproperties.com
425.283.5471

REESE VELTON
reesev@jshproperties.com
425.283.5484

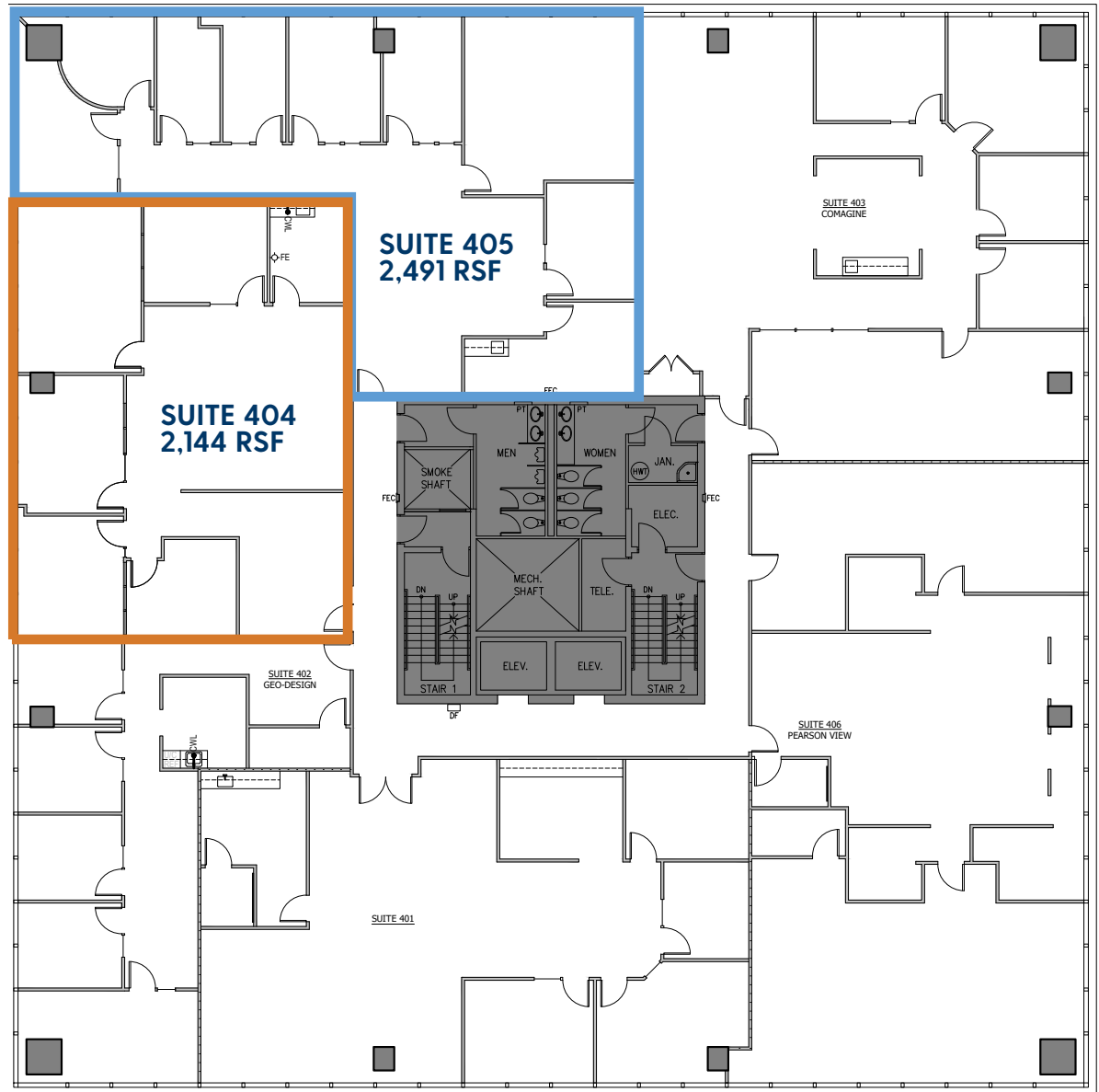
JSH | PROPERTIES, INC.
7325 166TH AVE NE, SUITE F260, REDMOND, WA 98052
425.455.0500 | www.jshproperties.com

NORTHWAY WEST | 4th Floor

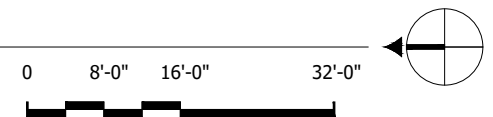
4TH FLOOR	RSF	RENT*
SUITE 404**	2,144	\$36.00/sf
SUITE 405**	2,491	\$36.00/sf

*Fully Serviced with Base Year Expense Stop.

** Available July 1st 2024



1 FOURTH FLOOR PLAN
5/6 Scale: 1/16" = 1'-0"



THE INFORMATION CONTAINED HEREIN HAS BEEN GIVEN TO US BY THE OWNER OF THE PROPERTY OR OTHER SOURCES WE DEEM RELIABLE. WE HAVE NO REASON TO DOUBT ITS ACCURACY, BUT WE DO NOT GUARANTEE IT. ALL INFORMATION SHOULD BE VERIFIED PRIOR TO PURCHASE OR LEASE.

ERNIE VELTON
erniev@jshproperties.com
425.283.5471

REESE VELTON
reesev@jshproperties.com
425.283.5484

JSH | PROPERTIES, INC.
7325 166TH AVE NE, SUITE F260, REDMOND, WA 98052
425.455.0500 | www.jshproperties.com

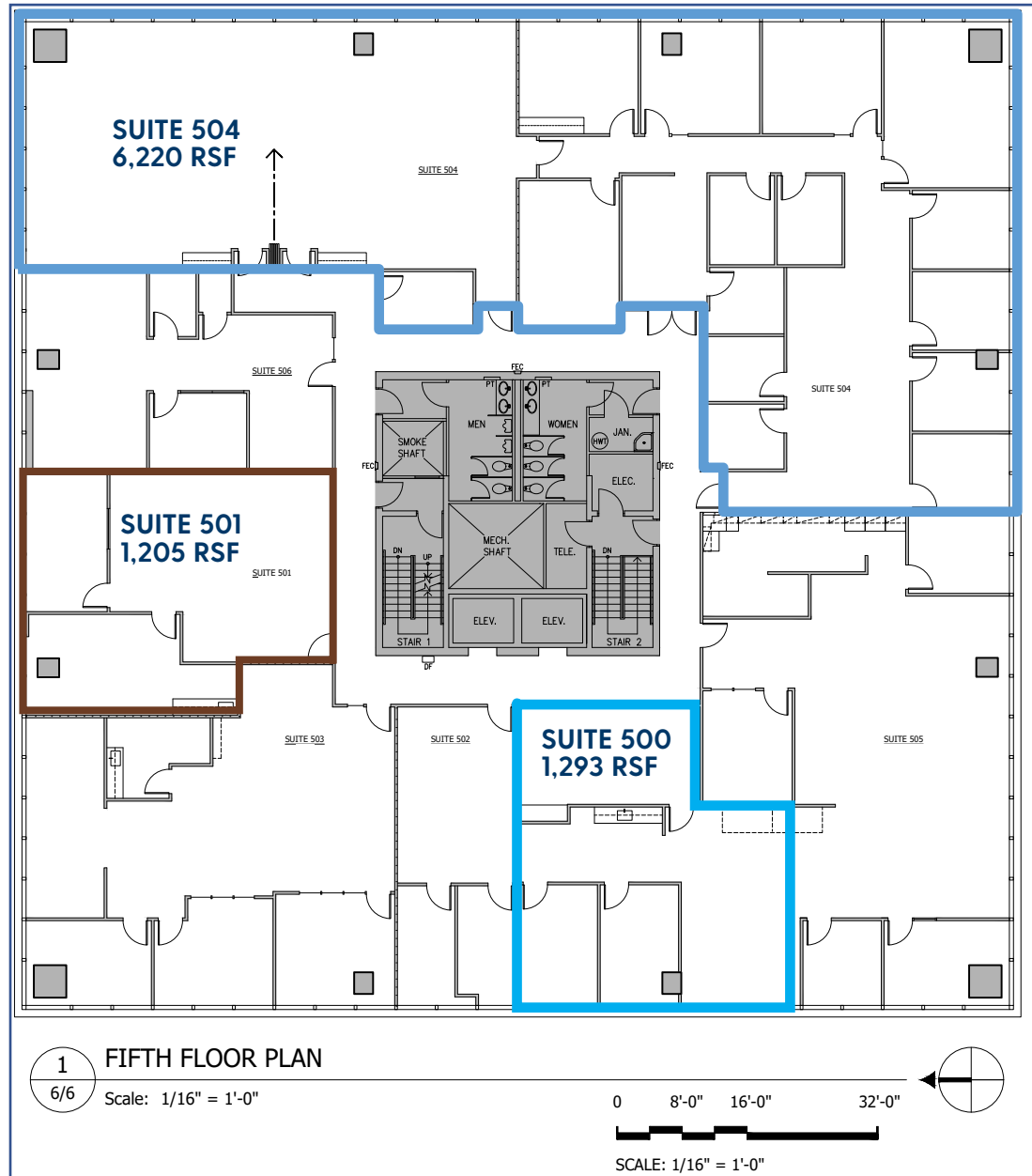
NORTHWAY WEST | Fifth Floor

5TH FLOOR	RSF	RENT*
SUITE 500	1,293	\$36.00/sf
SUITE 501	1,205	\$36.00/sf
SUITE 504	6,220	\$36.00/sf

*Fully Serviced with Base Year Expense Stop



RECEPTION AREA - SUITE 504



THE INFORMATION CONTAINED HEREIN HAS BEEN GIVEN TO US BY THE OWNER OF THE PROPERTY OR OTHER SOURCES WE DEEM RELIABLE. WE HAVE NO REASON TO DOUBT ITS ACCURACY, BUT WE DO NOT GUARANTEE IT. ALL INFORMATION SHOULD BE VERIFIED PRIOR TO PURCHASE OR LEASE.

ERNIE VELTON
erniev@jshproperties.com
425.283.5471

REESE VELTON
reesev@jshproperties.com
425.283.5484

JSH | PROPERTIES, INC.

7325 166TH AVE NE, SUITE F260, REDMOND, WA 98052
425.455.0500 | www.jshproperties.com



CONFERENCE ROOM - SUITE 504



PRIVATE OFFICES - SUITE 504



OPEN WORK SPACE - SUITE 504



MEETING ROOM - SUITE 504

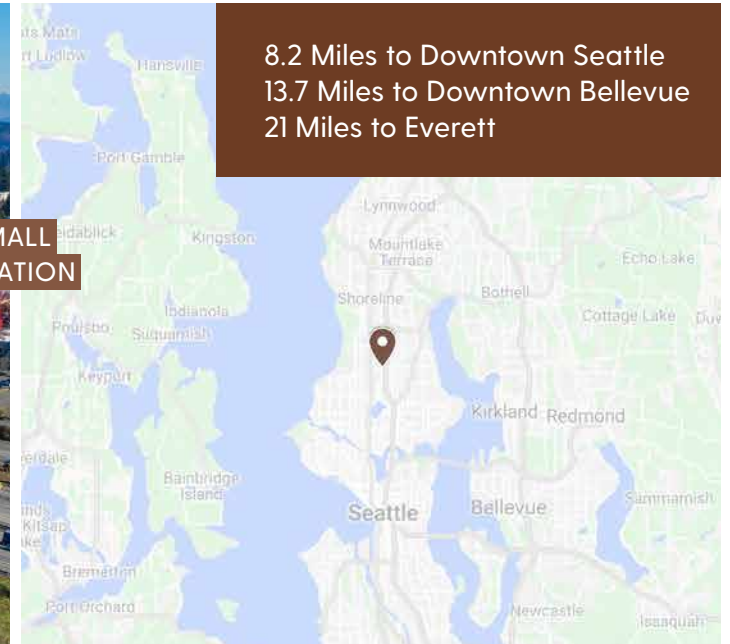
THE INFORMATION CONTAINED HEREIN HAS BEEN GIVEN TO US BY THE OWNER OF THE PROPERTY OR OTHER SOURCES WE DEEM RELIABLE. WE HAVE NO REASON TO DOUBT ITS ACCURACY, BUT WE DO NOT GUARANTEE IT. ALL INFORMATION SHOULD BE VERIFIED PRIOR TO PURCHASE OR LEASE.

ERNIE VELTON
erniev@jshproperties.com
425.283.5471

REESE VELTON
reesev@jshproperties.com
425.283.5484

 JSH | PROPERTIES, INC.

7325 166TH AVE NE, SUITE F260, REDMOND, WA 98052
425.455.0500 | www.jshproperties.com



- » Located near Northgate Mall Redevelopment
- » A few blocks north of the new Northgate Pedestrian/Bike Bridge connecting to Northgate Mall and Northgate Light Rail Station
- » Adjacent to I-5 freeway for easy access into and out of Northgate
- » Link Light Rail Station opened this year
- » NHL Practice Facility, Kraken Iceplex, is opened at Northgate Mall with seating for over 1,000 spectators
- » Located within walking distance of UW Medicine - Northwest Hospital and Northwest Outpatient Center

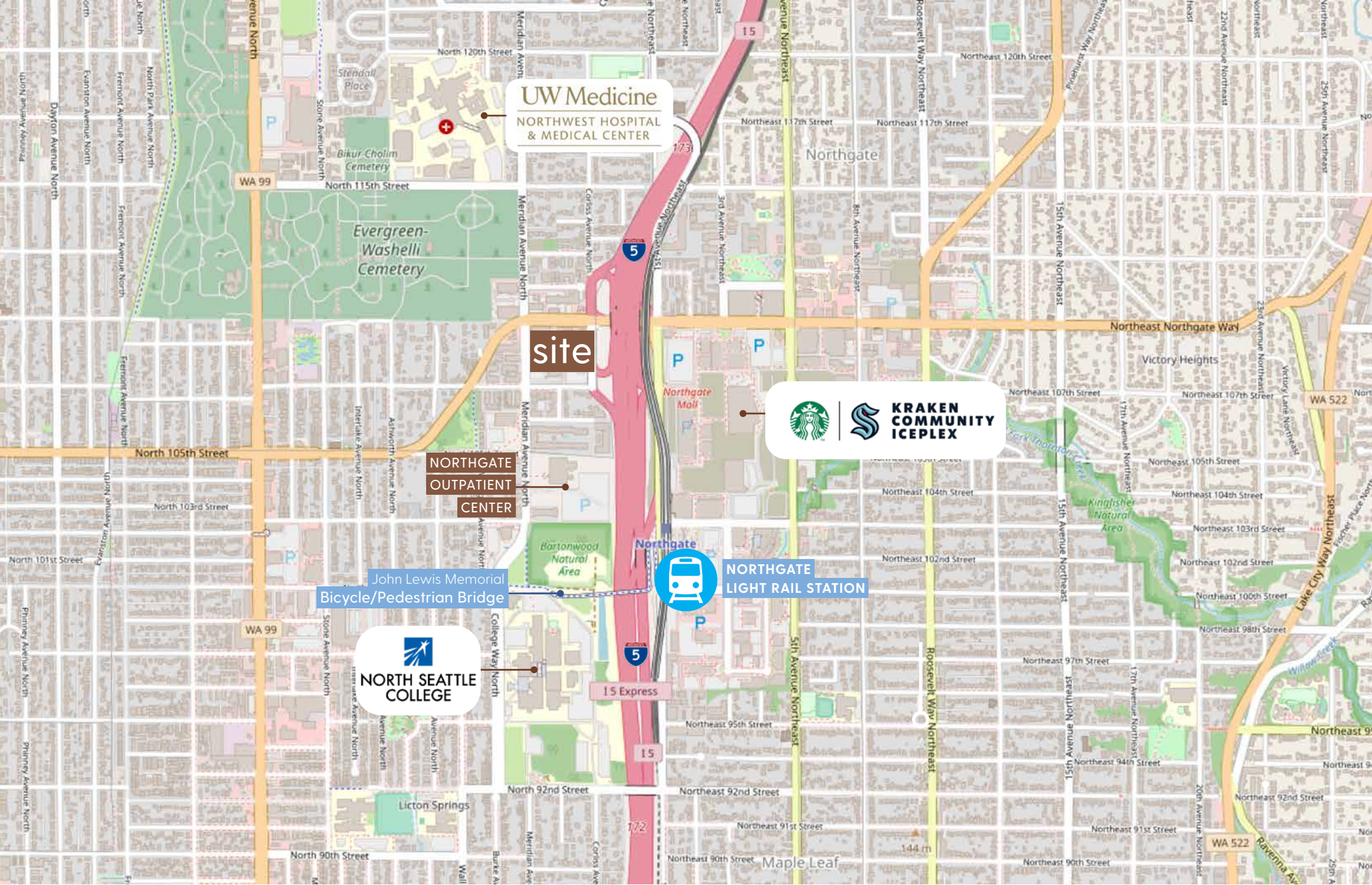
THE INFORMATION CONTAINED HEREIN HAS BEEN GIVEN TO US BY THE OWNER OF THE PROPERTY OR OTHER SOURCES WE DEEM RELIABLE. WE HAVE NO REASON TO DOUBT ITS ACCURACY, BUT WE DO NOT GUARANTEE IT. ALL INFORMATION SHOULD BE VERIFIED PRIOR TO PURCHASE OR LEASE.

ERNIE VELTON
 erniev@jshproperties.com
 425.283.5471

REESE VELTON
 reesev@jshproperties.com
 425.283.5484

JSH | PROPERTIES, INC.

7325 166TH AVE NE, SUITE F260, REDMOND, WA 98052
 425.455.0500 | www.jshproperties.com



THE INFORMATION CONTAINED HEREIN HAS BEEN GIVEN TO US BY THE OWNER OF THE PROPERTY OR OTHER SOURCES WE DEEM RELIABLE. WE HAVE NO REASON TO DOUBT ITS ACCURACY, BUT WE DO NOT GUARANTEE IT. ALL INFORMATION SHOULD BE VERIFIED PRIOR TO PURCHASE OR LEASE.

ERNIE VELTON
 erniev@jshproperties.com
 425.283.5471

REESE VELTON
 reesev@jshproperties.com
 425.283.5484

JSH PROPERTIES, INC.

7325 166TH AVE NE, SUITE F260, REDMOND, WA 98052
 425.455.0500 | www.jshproperties.com