

# Retail/Restaurant FOR LEASE

## NEW CONSTRUCTION

DELIVERY: FEBRUARY, 2024



### 208 N Samish Way ~ Bellingham

Nestled between Bellingham Bay and Mount Baker, KERF mixed-use development will feature 196 apartments and 2,627 square feet of retail space in the Samish Way Urban Village. Retailers will benefit from being less than 2 miles from Western Washington University with over 16k students and faculty. Samish Way offers a dynamic and youthful atmosphere and strong exposure for retail growth.

ALEX VLASKI  
425.505.2700  
alexv@jshproperties.com

AARON BENNETT  
206.859.4500  
aaronb@jshproperties.com

 JSH | PROPERTIES, INC.





## KERF RETAIL DELIVERY: FEBRUARY 2024

196 apartment units with 2,627 SF of street level retail

- » Ideal for: retail, coffee, restaurant, service, pet retail/service
- » Type I venting and grease interceptor available
- » Within two miles of Western Washington University



## PROPERTY AMENITIES

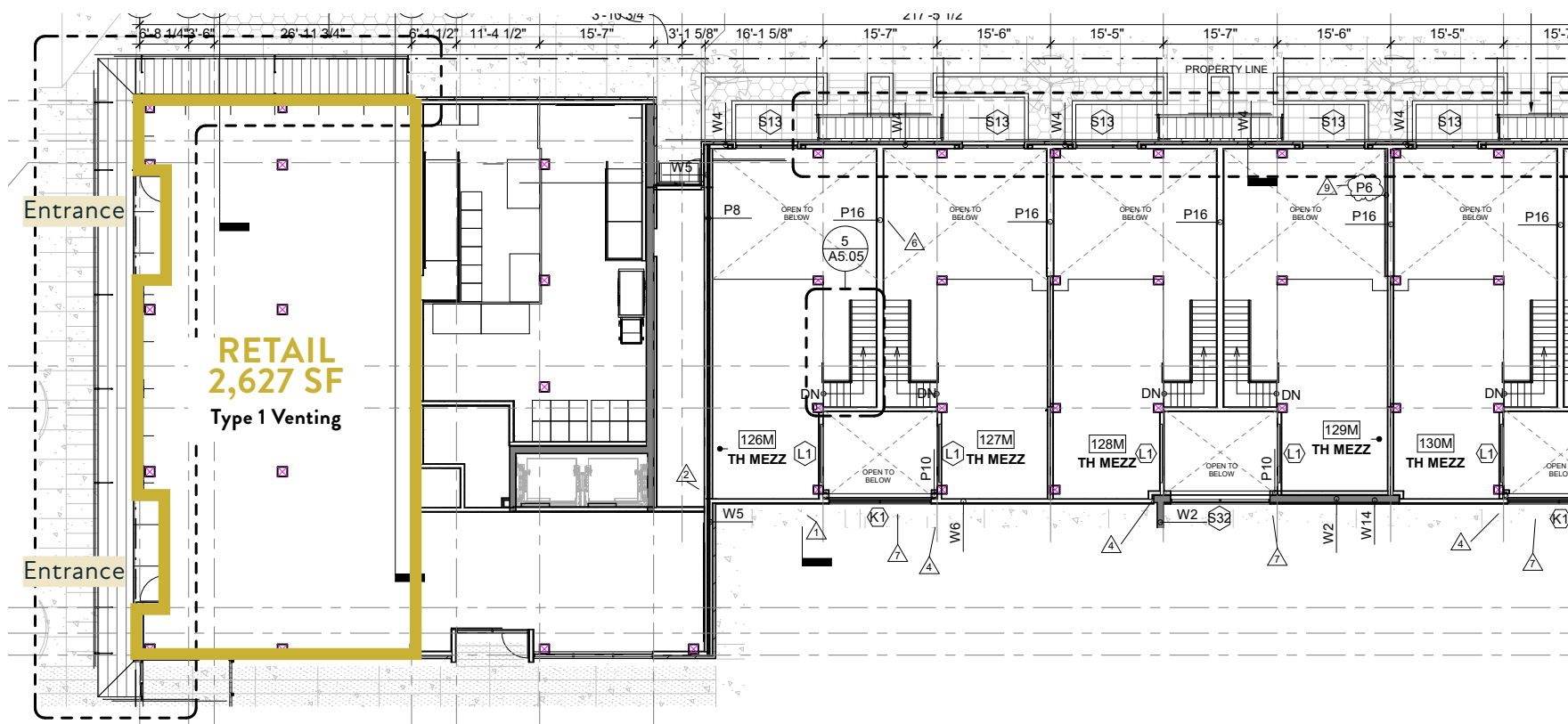
ECO-FRIENDLY CONSTRUCTION  
 EXPOSED WOOD CEILINGS  
 EXPANSIVE WINDOWS FOR MAXIMUM EXPOSURE  
 CONTEMPORARY ARCHITECTURAL DESIGN



AVAILABLE	RSF	BASE RENT	NNN EST./SF	FEATURES
RETAIL	2,627	\$30.00	\$9.00	Ideal for restaurant, service, medical, pet Type 1 venting and grease receptor

Abbott Street

North Samish Way ~13K Vehicles per Day



## DEMOGRAPHICS ~ 1 MILE RADIUS

### KEY FACTS



21,926

Population



24.9

Median Age



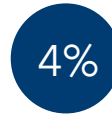
2.0

Average Household Size



\$79,144

2023 Average Household Income (Esri)



4%

No High School Diploma



17%

High School Graduate



30%

Some College



49%

Bachelor's/Grad/Professional Degree

### EMPLOYMENT



56%

White Collar



18%

Blue Collar



26%

Services



815

Total Businesses



9,327

Total Employees

### BUSINESS

### ANNUAL HOUSEHOLD SPENDING



\$1,771

Apparel & Services



\$227

Computers & Hardware



\$2,997

Eating Out



\$1,629

Travel



\$40

Theatre/Operas/Concerts



\$45

Movies/Museums/Parks



\$5,130

Groceries



\$5,197

Health Care



\$42

Sports Events



\$9

Online Games

### ANNUAL LIFESTYLE SPENDING





15,197 Students  
700 Faculty

**KERF** SITE

Days Inn Wyndham

El Agave Mexican

Happy Nails

Bellingham Lodge

Blue Fin Sushi

Coachman Inn

Bay City Inn

The Lodge Coffee

Wallgreens

Haggen

Rite Aid

PetStop

Starbucks

REI

Tandoori Bites

Sehome High School



2023 DEMOGRAPHICS	1 MILE	3 MILE	5 MILE
Population	21,926	74,861	106,522
Daytime Population	21,434	86,753	119,886
Households	8,854	31,971	45,617
Avg. HH Income	\$79,144	\$101,158	\$101,140
Median Age	24		
Renter Occupied	69%		