



13,364 SF Retail For Lease

Directly Across from Target and Kitsap Mall

Right off Highway 3 & Kitsap Mall Blvd NW

Former Great Floors

Silverdale

RETAIL FOR LEASE FORMER GREAT FLOORS

3200 NW Randall Way, Silverdale, WA 98383 | KITSAP PENINSULA

For leasing information contact

CHAD WALDBAUM, CCIM
425.531.7098
chadw@jshproperties.com

STEVE OLSEN
425.283.5465
steveo@jshproperties.com

 **JSH | PROPERTIES, INC.**

THE INFORMATION CONTAINED HEREIN HAS BEEN GIVEN TO US BY SOURCES WE DEEM RELIABLE, WE HAVE NO REASON TO DOUBT ITS ACCURACY, BUT WE DO NOT GUARANTEE IT. ALL INFORMATION SHOULD BE VERIFIED PRIOR TO PURCHASE OR LEASE.

JSHPROPERTIES.COM



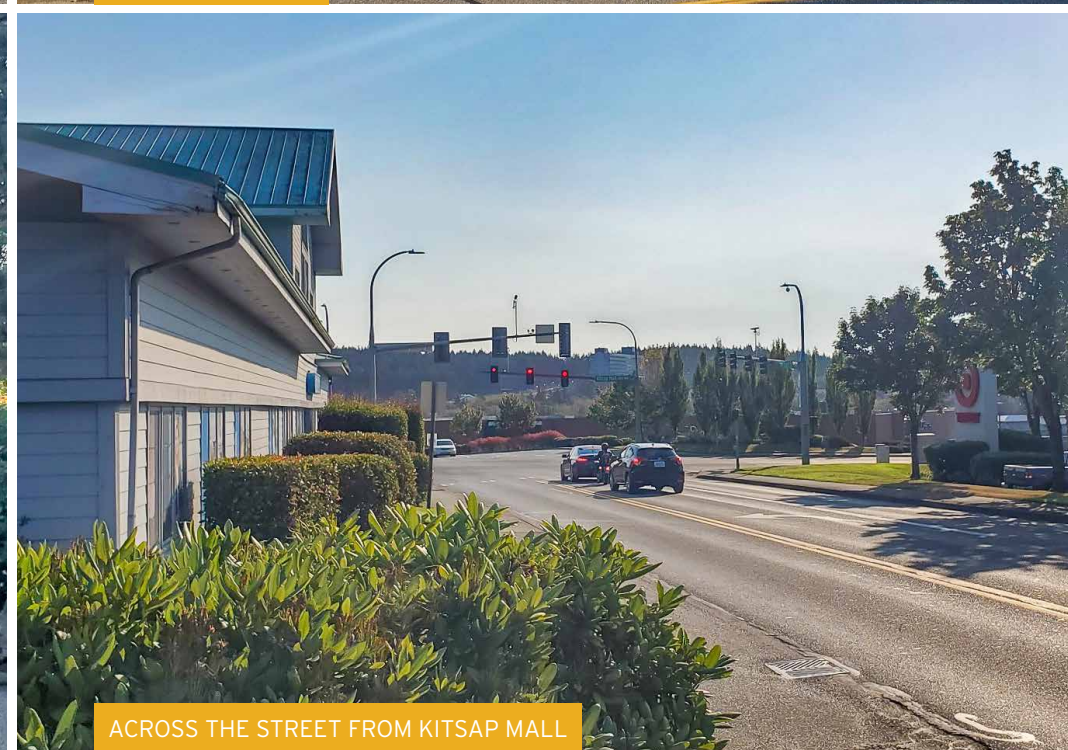
STRONG VISIBILITY FROM TARGET



RETAIL ENTRANCE



PARKING & LOADING AREA



ACROSS THE STREET FROM KITSAP MALL

Red Robin
GOURMET BURGERS AND BEVS

TARGET

ROSS
DRESS FOR LESS

HOBBY LOBBY



TJ-maxx

H&M



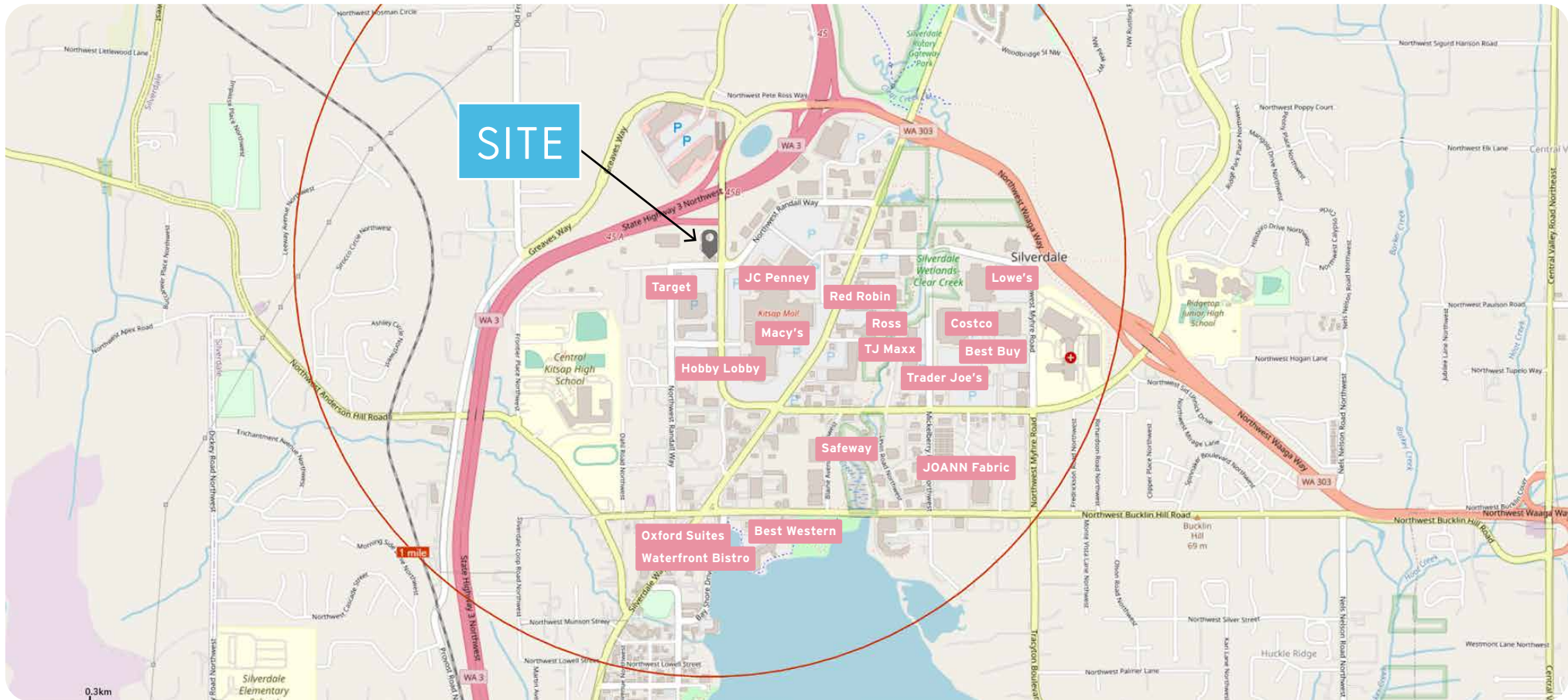
macy's

JCPenney

SAFeway

COSTCO
WHOLESALE

DICK'S
SPORTING GOODS



Serving Kitsap Peninsula in Silverdale, Washington, this retail site features outstanding visibility and sits directly off Highway 3 on Kitsap Mall Boulevard at the entrance to the Kitsap Peninsula's largest retail sector. Area retail/hospitality includes: Kitsap Mall, Silverdale Plaza, Kitsap Mall Plaza, Silverdale Shopping Center, Best Western Hotel, Oxford Suites & Waterfront Bistro. Three miles North, Kitsap Naval Base employs over 31,000 military and civilian personnel, and contractors. Kitsap's idyllic setting and close proximity to the metro Seattle area makes tourism one of Kitsap County's top economic drivers, with destination-worthy wedding venues, resorts, conference centers, golf courses and casinos.

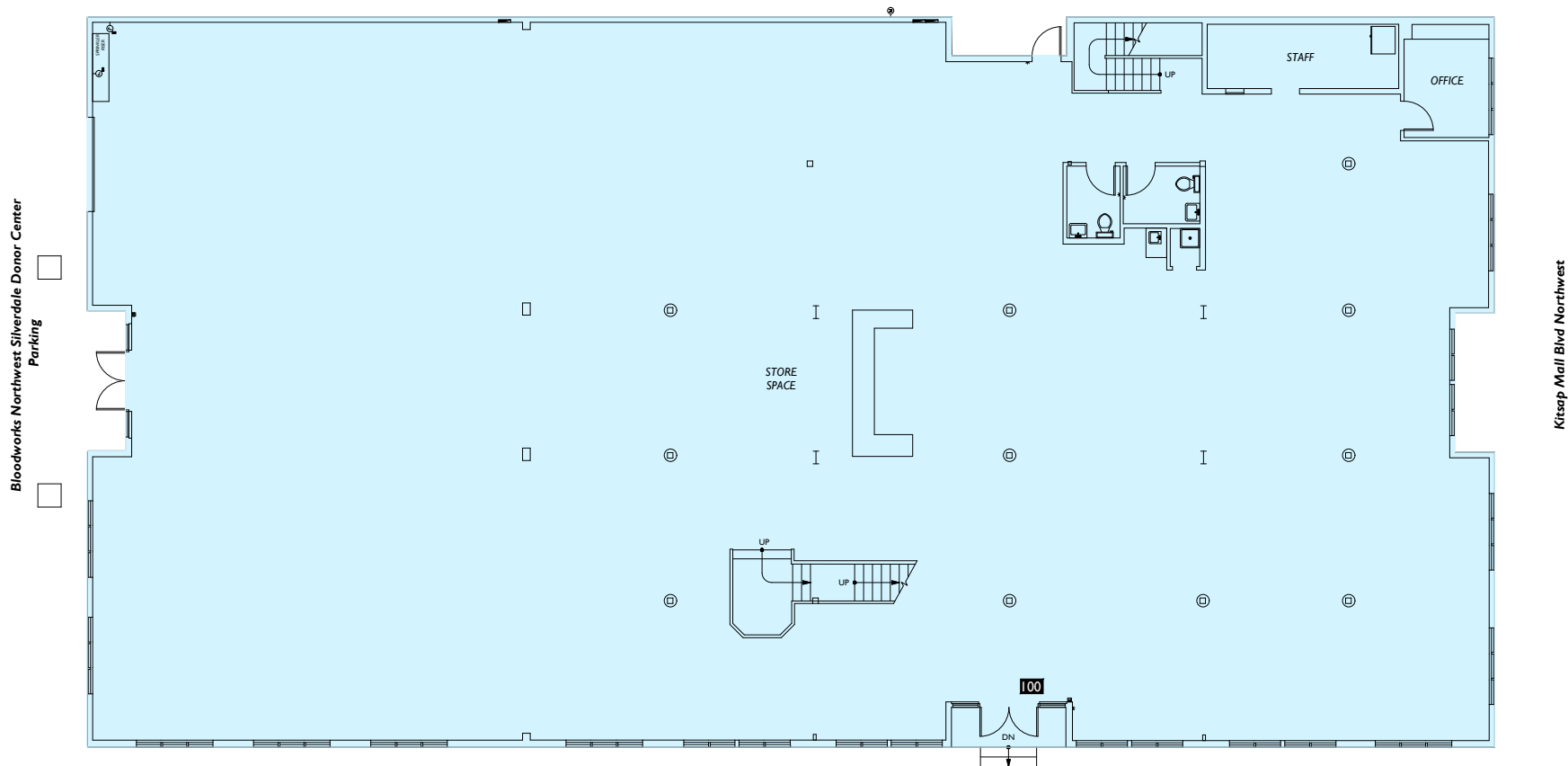
SILVERDALE - FORMER GREAT FLOORS RETAIL FOR LEASE | 3 |

Silverdale Retail

RETAIL AVAILABLE - FORMER GREAT FLOORS

RSF	ASKING RENT	COMMENTS
13,364 SF	\$25.00/SF, NNN	13,364 SF Total (2,587 SF Mezzanine - Floor plan on next page) Right off Highway 3 & Kitsap Mall Blvd NW

Olive Garden
Parking

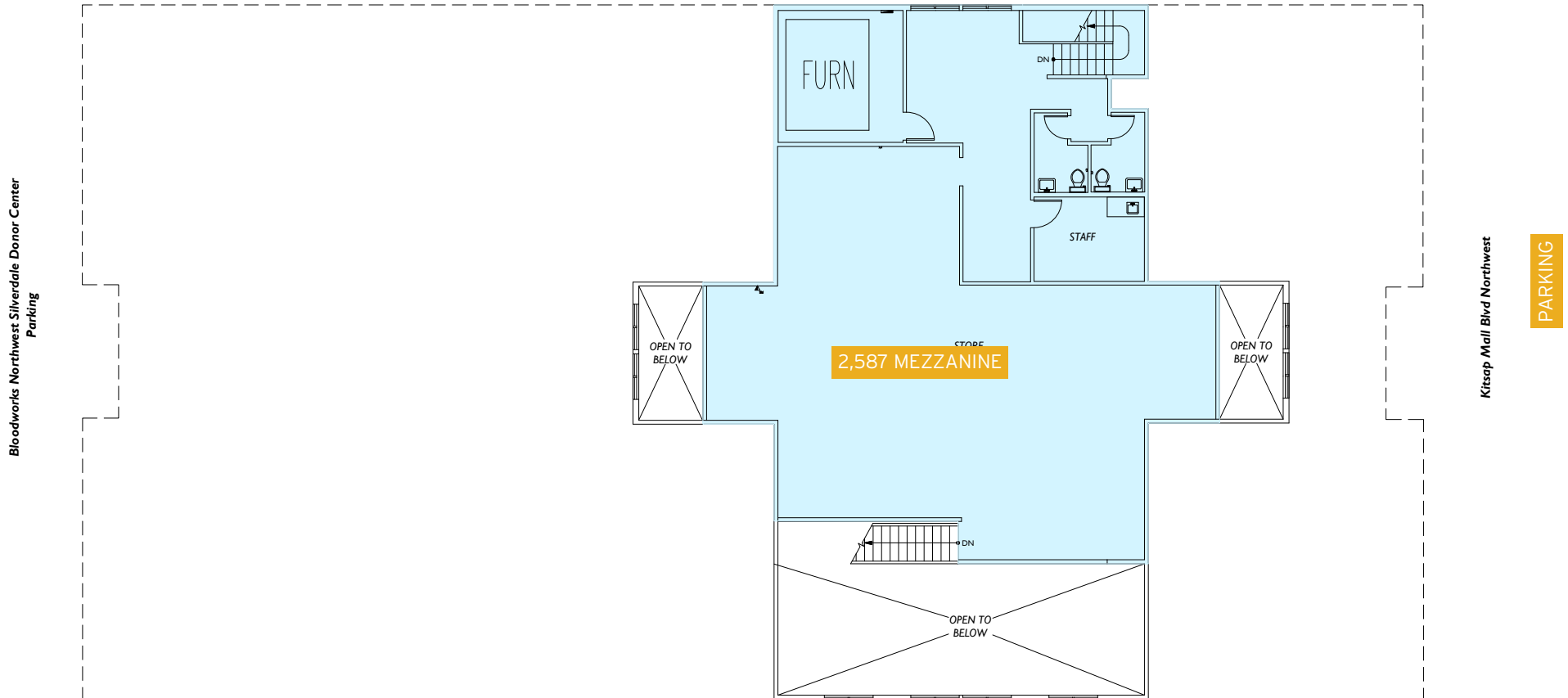


Silverdale Retail

RETAIL AVAILABLE - FORMER GREAT FLOORS

RSF	ASKING RENT	COMMENTS
13,364 SF	\$25.00/SF, NNN	13,364 SF Total (2,587 SF Mezzanine - Floor plan on next page) Right off Highway 3 & Kitsap Mall Blvd NW

Olive Garden
Parking



SILVERDALE - FORMER GREAT FLOORS RETAIL FOR LEASE | 5 |

Kitsap County

Silverdale is located in Kitsap County, an integral part of the dynamic, global Greater Seattle regional economy; and, a leader in several key industries in the region, both legacy and emerging sectors, including: Defense, Maritime, Manufacturing, Technology, Healthcare and Tourism. Kitsap Naval Base employs over 31,000 military and civilian personnel, in addition to defense contractor operations. Kitsap residents and tourists enjoy over 250 miles of scenic saltwater coastline. The median age of residents within 3 miles is 36. Households in this area spend 9% more on housing, food, apparel, transportation and entertainment than the average US household.

2023 DEMOGRAPHICS

	1 MILES	3 MILES	5 MILES
Population	3,588	37,755	74,495
Daytime Population	15,740	42,304	73,685
Households	1,812	13,766	27,445
Avg. Household Income	\$102,633	\$127,140	\$124,050

