

**AVAILABLE**

**FULL 2nd FLOOR**

**14,568 RSF**



1,293 / 1,013 RSF  
AVAILABLE

1,466 RSF / 2,491 RSF  
AVAILABLE

1,727 - 14,568 RSF  
FULL FLOOR AVAILABLE

9,273 RSF  
OFFICE W/KITCHEN AVAILABLE

# Northway West Building OFFICE SPACE FOR LEASE

10700 Meridian Ave N, Seattle, WA, 98133

**ERNIE VELTON**

erniev@jshproperties.com  
425.283.5471

**REESE VELTON**

reesev@jshproperties.com  
425.283.5484



**JSH | PROPERTIES, INC.**

7325 166TH AVE NE, SUITE F260, REDMOND, WA 98052  
425.455.0500 | WWW.JSHPROPERTIES.COM

## PROPERTY

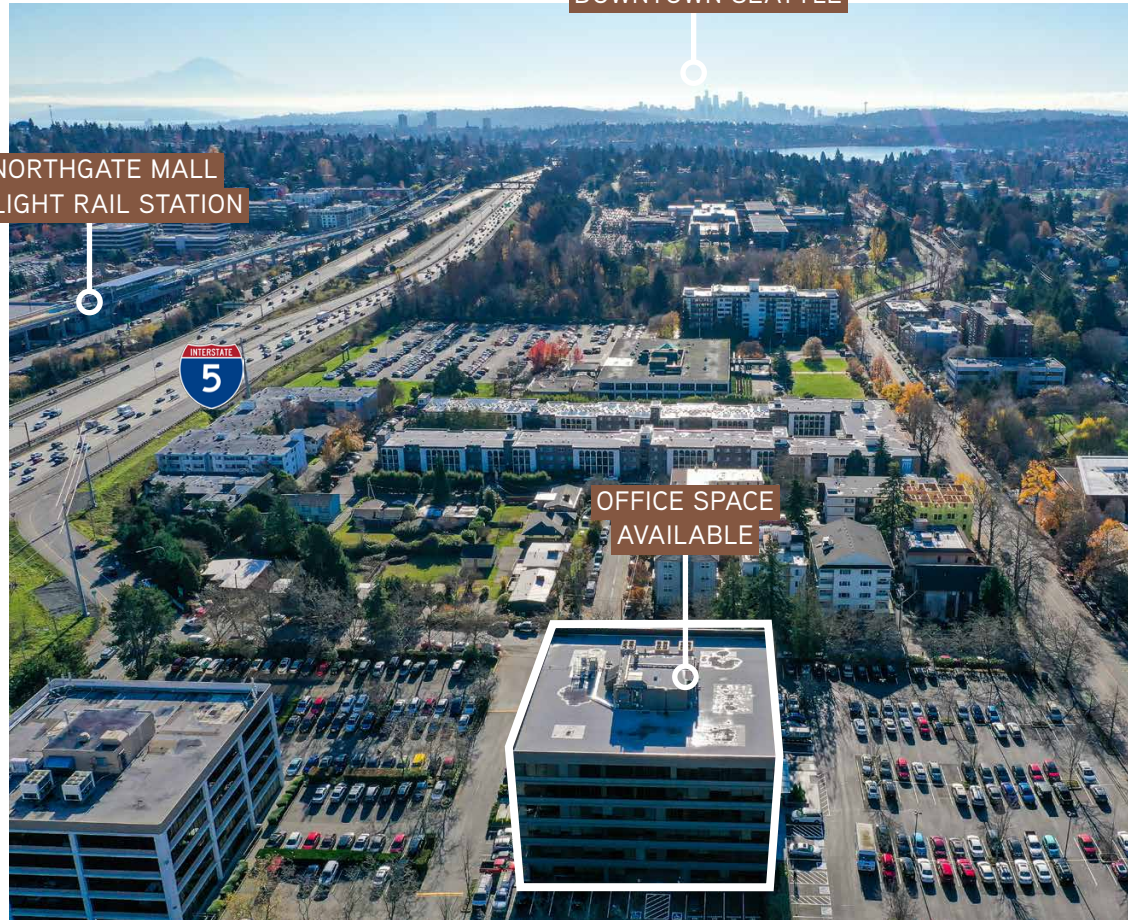
**10700 MERIDIAN AVE N  
SEATTLE, WA, 98133**

- ⊙ Sweeping mountain and Puget Sound views
- ⊙ Class A office building with easy access to I-5.
- ⊙ Within a few blocks of the new Northgate Pedestrian/Bike Bridge over Interstate 5 (I-5) will open 2021 to allow easy walking access to Northgate mall, restaurants, and the light rail station (see map on next page)
- ⊙ Ample parking
- ⊙ Walk score (72) very walkable

Pedestrian & Bike Bridge (2021)



NORTHGATE MALL  
& LIGHT RAIL STATION



DOWNTOWN SEATTLE



THE INFORMATION CONTAINED HEREIN HAS BEEN GIVEN TO US BY THE OWNER OF THE PROPERTY OR OTHER SOURCES WE DEEM RELIABLE. WE HAVE NO REASON TO DOUBT ITS ACCURACY, BUT WE DO NOT GUARANTEE IT. ALL INFORMATION SHOULD BE VERIFIED PRIOR TO PURCHASE OR LEASE.

**ERNIE VELTON**  
erniev@jshproperties.com  
425.283.5471

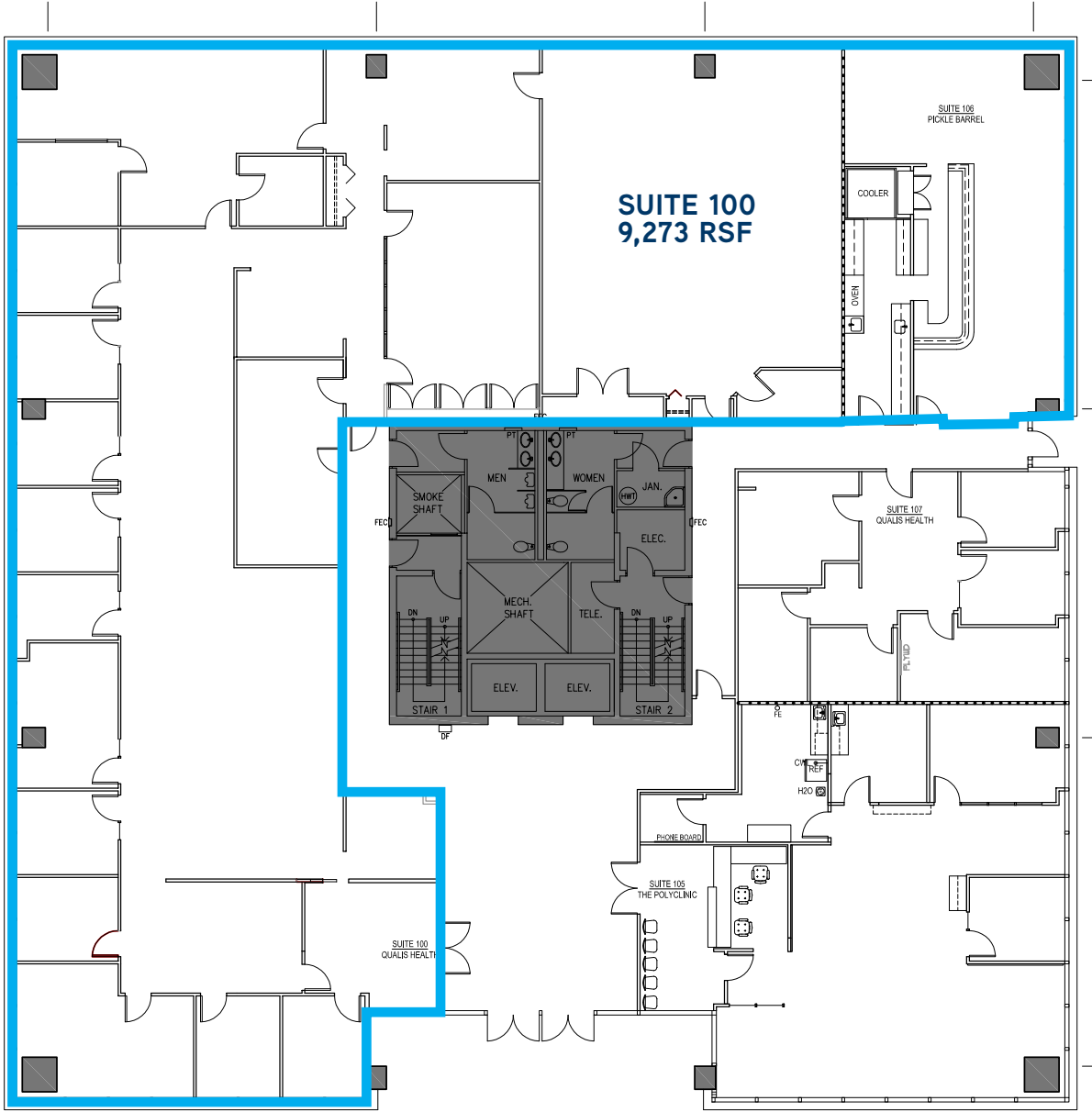
**REESE VELTON**  
reesev@jshproperties.com  
425.283.5484

 **JSH | PROPERTIES, INC.**

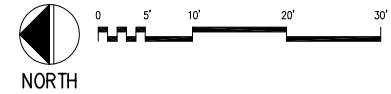
7325 166TH AVE NE, SUITE F260, REDMOND, WA 98052  
425.455.0500 | WWW.JSHPROPERTIES.COM

# NORTHWAY WEST | 1st Floor

1ST FLOOR	RSF	GROSS RENT
SUITE 100	9,273	\$39.00/sf (Gross)



1 FIRST FLOOR PLAN  
1/16" = 1'-0"



THE INFORMATION CONTAINED HEREIN HAS BEEN GIVEN TO US BY THE OWNER OF THE PROPERTY OR OTHER SOURCES WE DEEM RELIABLE. WE HAVE NO REASON TO DOUBT ITS ACCURACY, BUT WE DO NOT GUARANTEE IT. ALL INFORMATION SHOULD BE VERIFIED PRIOR TO PURCHASE OR LEASE.

**ERNIE VELTON**  
erniev@jshproperties.com  
425.283.5471

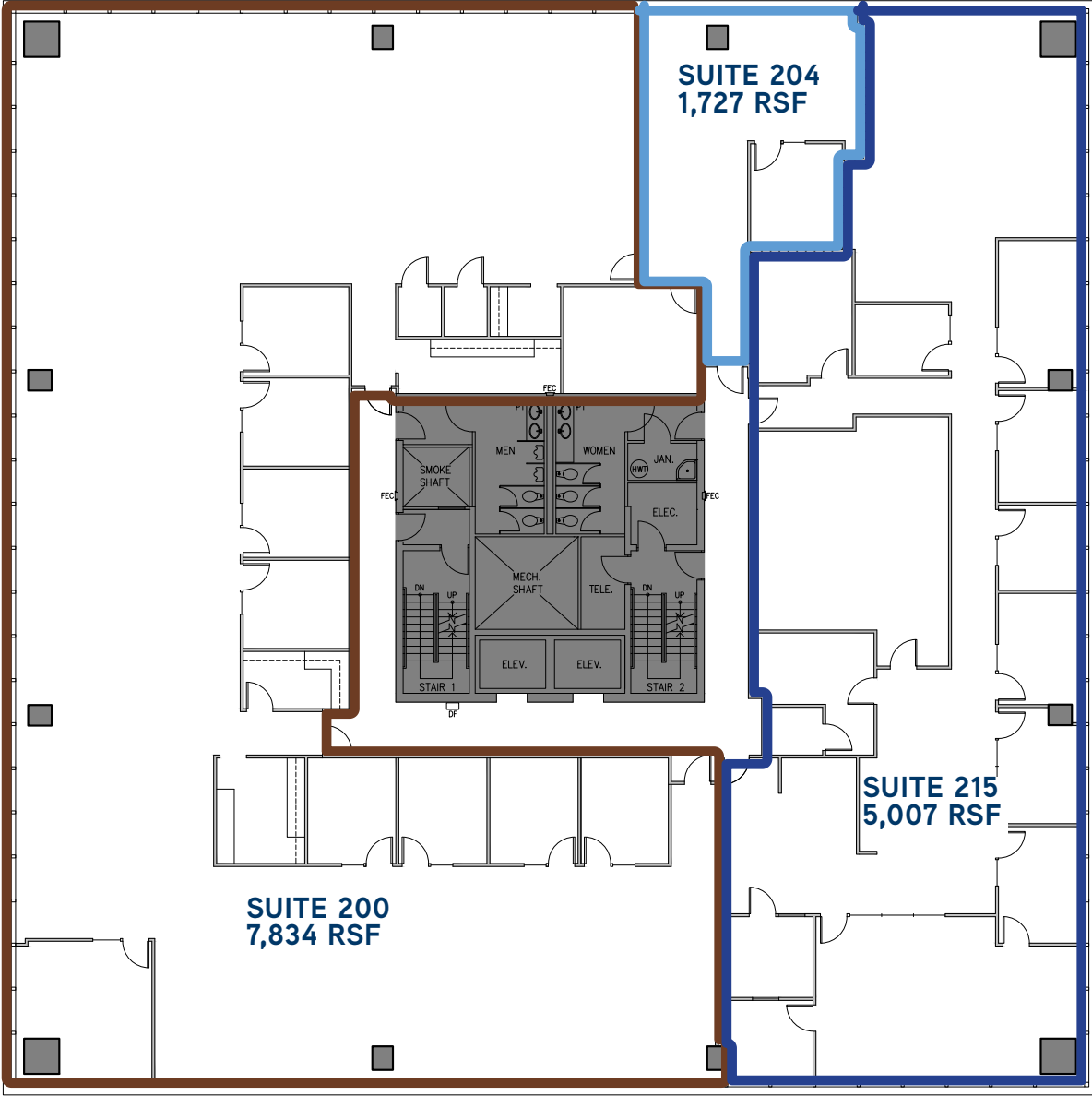
**REESE VELTON**  
reesev@jshproperties.com  
425.283.5484

**JSH | PROPERTIES, INC.**

7325 166TH AVE NE, SUITE F260, REDMOND, WA 98052  
425.455.0500 | WWW.JSHPROPERTIES.COM

# NORTHWAY WEST | 2nd Floor

2ND FLOOR	RSF	GROSS RENT
FULL FLOOR	14,568	\$39.00/sf (Gross)
SUITE 200	7,834	\$39.00/sf (Gross)
SUITE 204	1,727	\$39.00/sf (Gross)
SUITE 215	5,007	\$39.00/sf (Gross)



**1** SECOND FLOOR PLAN  
3/6 Scale: 1/16" = 1'-0"



THE INFORMATION CONTAINED HEREIN HAS BEEN GIVEN TO US BY THE OWNER OF THE PROPERTY OR OTHER SOURCES WE DEEM RELIABLE. WE HAVE NO REASON TO DOUBT ITS ACCURACY, BUT WE DO NOT GUARANTEE IT. ALL INFORMATION SHOULD BE VERIFIED PRIOR TO PURCHASE OR LEASE.

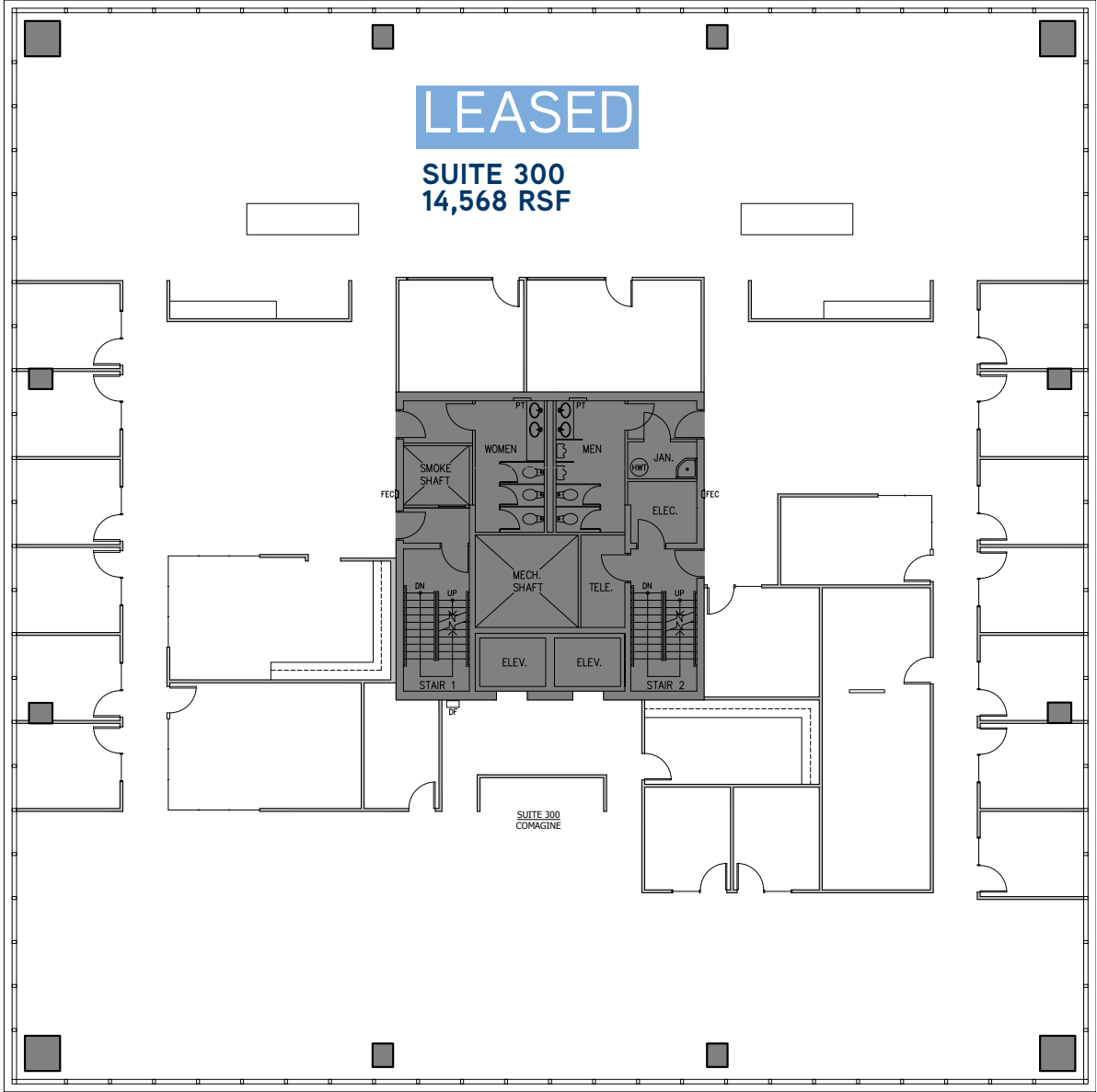
**ERNIE VELTON**  
erniev@jshproperties.com  
425.283.5471

**REESE VELTON**  
reesev@jshproperties.com  
425.283.5484

**JSH | PROPERTIES, INC.**  
7325 166TH AVE NE, SUITE F260, REDMOND, WA 98052  
425.455.0500 | WWW.JSHPROPERTIES.COM

# NORTHWAY WEST | 3rd Floor

3RD FLOOR	RSF	GROSS RENT
LEASED	14,568	\$39.00/sf (Gross)



1 THIRD FLOOR PLAN  
4/6 Scale: 1/16" = 1'-0"



THE INFORMATION CONTAINED HEREIN HAS BEEN GIVEN TO US BY THE OWNER OF THE PROPERTY OR OTHER SOURCES WE DEEM RELIABLE. WE HAVE NO REASON TO DOUBT ITS ACCURACY, BUT WE DO NOT GUARANTEE IT. ALL INFORMATION SHOULD BE VERIFIED PRIOR TO PURCHASE OR LEASE.

**ERNIE VELTON**  
erniev@jshproperties.com  
425.283.5471

**REESE VELTON**  
reesev@jshproperties.com  
425.283.5484

**JSH | PROPERTIES, INC.**

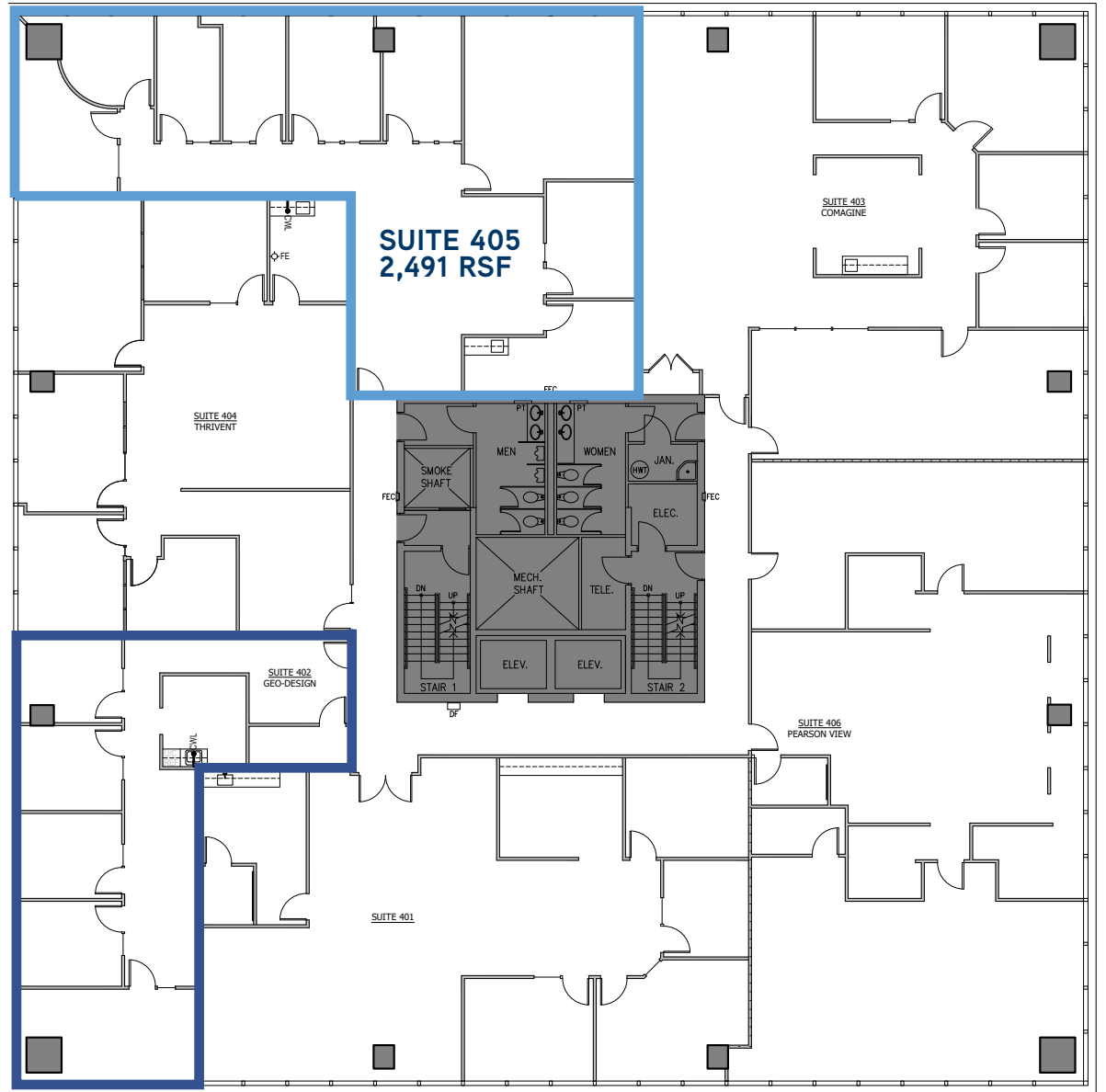
7325 166TH AVE NE, SUITE F260, REDMOND, WA 98052  
425.455.0500 | WWW.JSHPROPERTIES.COM

# NORTHWAY WEST | 4th Floor

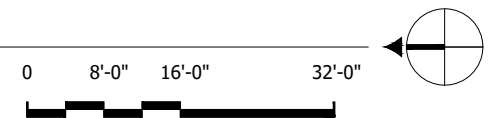
4TH FLOOR	RSF	GROSS RENT
SUITE 402	1,466	\$39.00/sf (Gross)
SUITE 405	2,491	\$39.00/sf (Gross)

**SUITE 402**  
1,466 RSF

**SUITE 405**  
2,491 RSF



**1** FOURTH FLOOR PLAN  
5/6 Scale: 1/16" = 1'-0"



THE INFORMATION CONTAINED HEREIN HAS BEEN GIVEN TO US BY THE OWNER OF THE PROPERTY OR OTHER SOURCES WE DEEM RELIABLE. WE HAVE NO REASON TO DOUBT ITS ACCURACY, BUT WE DO NOT GUARANTEE IT. ALL INFORMATION SHOULD BE VERIFIED PRIOR TO PURCHASE OR LEASE.

**ERNIE VELTON**  
erniev@jshproperties.com  
425.283.5471

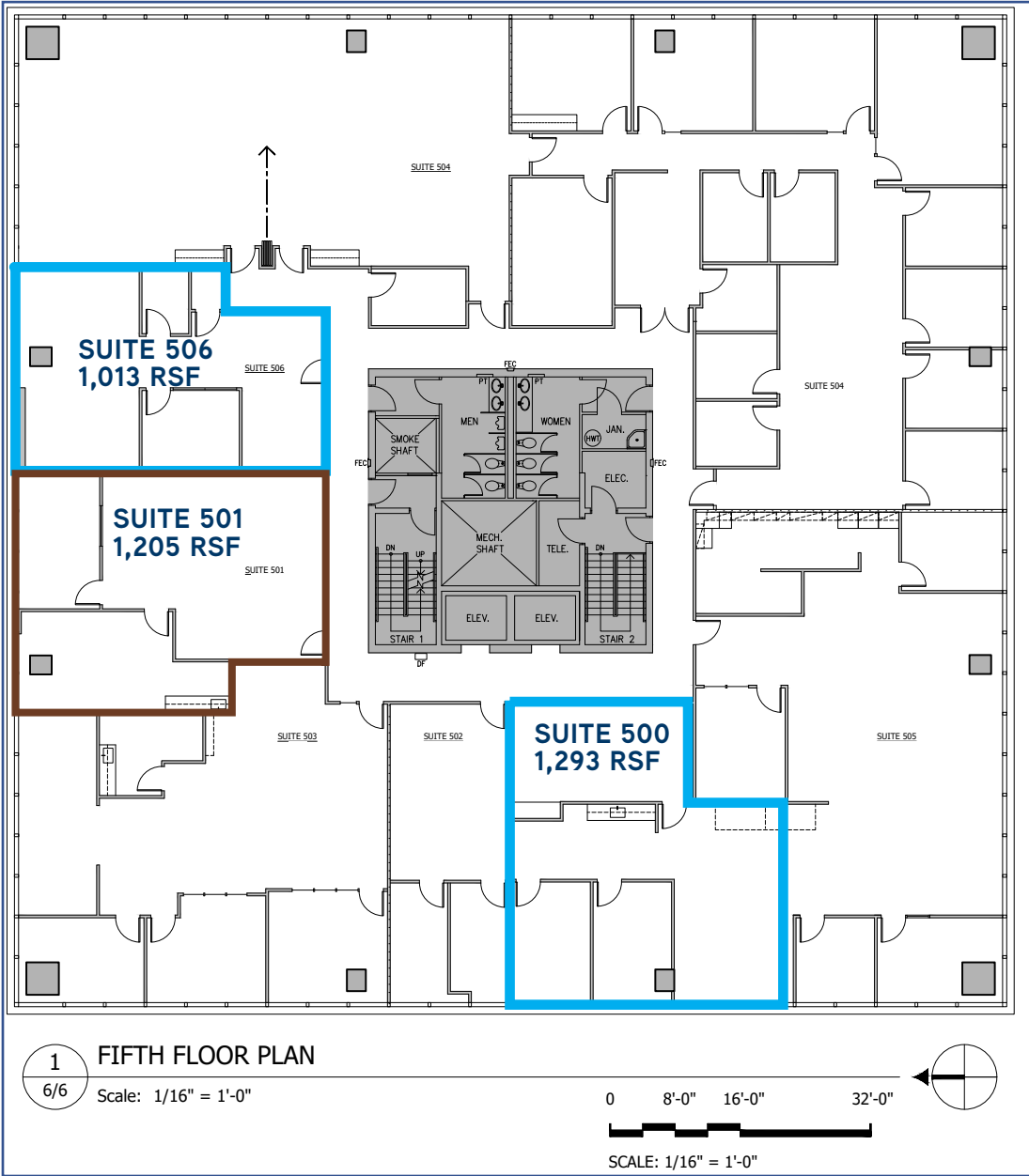
**REESE VELTON**  
reesev@jshproperties.com  
425.283.5484

**JSH | PROPERTIES, INC.**

7325 166TH AVE NE, SUITE F260, REDMOND, WA 98052  
425.455.0500 | WWW.JSHPROPERTIES.COM

# NORTHWAY WEST | Fifth Floor

5TH FLOOR	RSF	GROSS RENT
SUITE 500	1,293	\$39.00/sf (Gross)
SUITE 501	1,205	\$39.00/sf (Gross)
SUITE 506	1,013	\$39.00/sf (Gross)



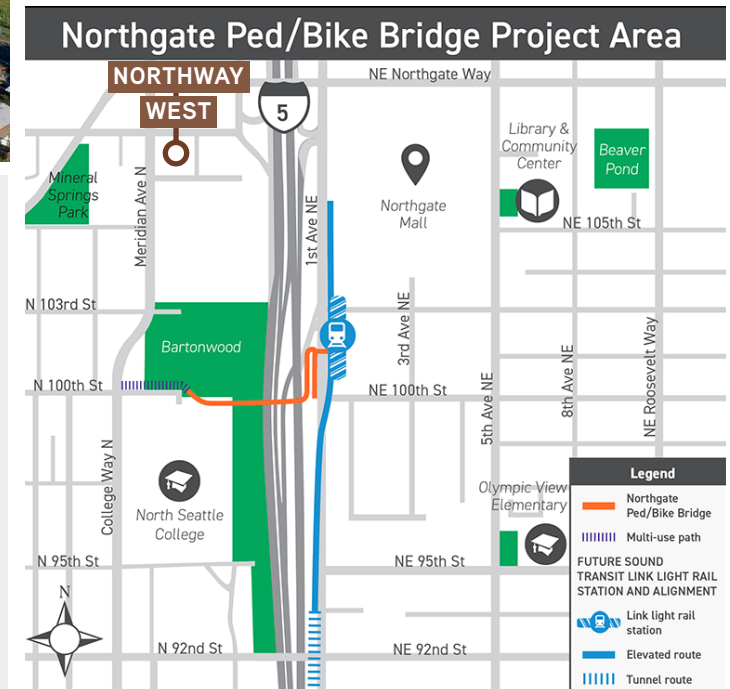
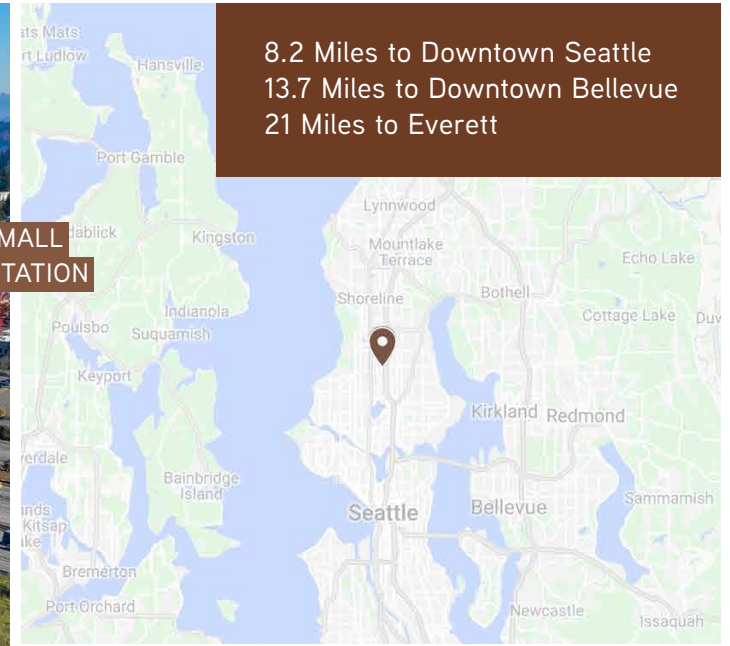
THE INFORMATION CONTAINED HEREIN HAS BEEN GIVEN TO US BY THE OWNER OF THE PROPERTY OR OTHER SOURCES WE DEEM RELIABLE. WE HAVE NO REASON TO DOUBT ITS ACCURACY, BUT WE DO NOT GUARANTEE IT. ALL INFORMATION SHOULD BE VERIFIED PRIOR TO PURCHASE OR LEASE.

**ERNIE VELTON**  
erniev@jshproperties.com  
425.283.5471

**REESE VELTON**  
reesev@jshproperties.com  
425.283.5484

**JSH | PROPERTIES, INC.**

7325 166TH AVE NE, SUITE F260, REDMOND, WA 98052  
425.455.0500 | WWW.JSHPROPERTIES.COM



- ⊙ Located near Northgate Mall Redevelopment.
- ⊙ A few blocks north of the new Northgate Pedestrian/Bike Bridge project currently underway (2021) connecting to Northgate Mall.
- ⊙ Adjacent to I-5 freeway for easy access into and out of Northgate.
- ⊙ Link Light Rail Station opening within a few blocks in 2021.
- ⊙ NHL Practice Facility is planned to open at Northgate Mall in 2021 with seating for over 1,000 spectators.
- ⊙ Located within walking distance of UW Medicine - Northwest Hospital and Medical Center

THE INFORMATION CONTAINED HEREIN HAS BEEN GIVEN TO US BY THE OWNER OF THE PROPERTY OR OTHER SOURCES WE DEEM RELIABLE. WE HAVE NO REASON TO DOUBT ITS ACCURACY, BUT WE DO NOT GUARANTEE IT. ALL INFORMATION SHOULD BE VERIFIED PRIOR TO PURCHASE OR LEASE.

**ERNIE VELTON**  
 erniev@jshproperties.com  
 425.283.5471

**REESE VELTON**  
 reesev@jshproperties.com  
 425.283.5484

**JSH PROPERTIES, INC.**  
 7325 166TH AVE NE, SUITE F260, REDMOND, WA 98052  
 425.455.0500 | WWW.JSHPROPERTIES.COM