

OFFICE SPACE AVAILABLE

3,054-4,978 SF

\$38.00/SF

Modified Gross

\$ 1.20/SF, Additional Expenses



# REDMOND TOWN CENTER

## *Office Space For Lease*

7525 166th Avenue NE | Redmond, WA 98052

CHAD WALDBAUM, ccim  
chadw@jshproperties.com  
425.531.7098

 JSH | PROPERTIES, INC.

7325 166TH AVENUE NE, SUITE F-260 | REDMOND, WA 98052  
425.455.0500 | [www.jshproperties.com](http://www.jshproperties.com)

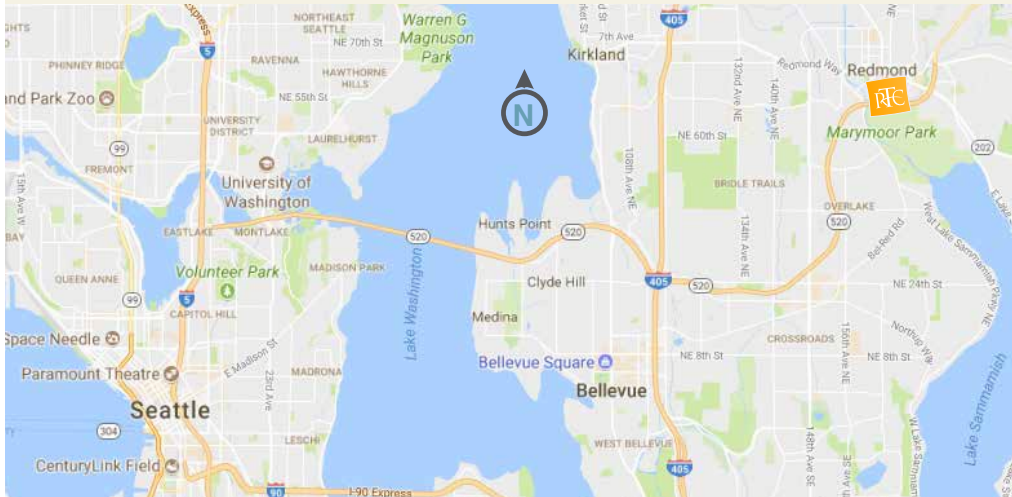


# REDMOND TOWN CENTER

7525 166TH AVE NE REDMOND, WA 98052

- OPERATING EXPENSES** \$ 1.20/SF Approximate janitorial and water billed directly to Tenant
- PARKING** Free, plentiful parking
- AMENITIES** Over 120 retailers, restaurants, fitness, and three hotels
- MANAGEMENT** On-site management and 24/7 security

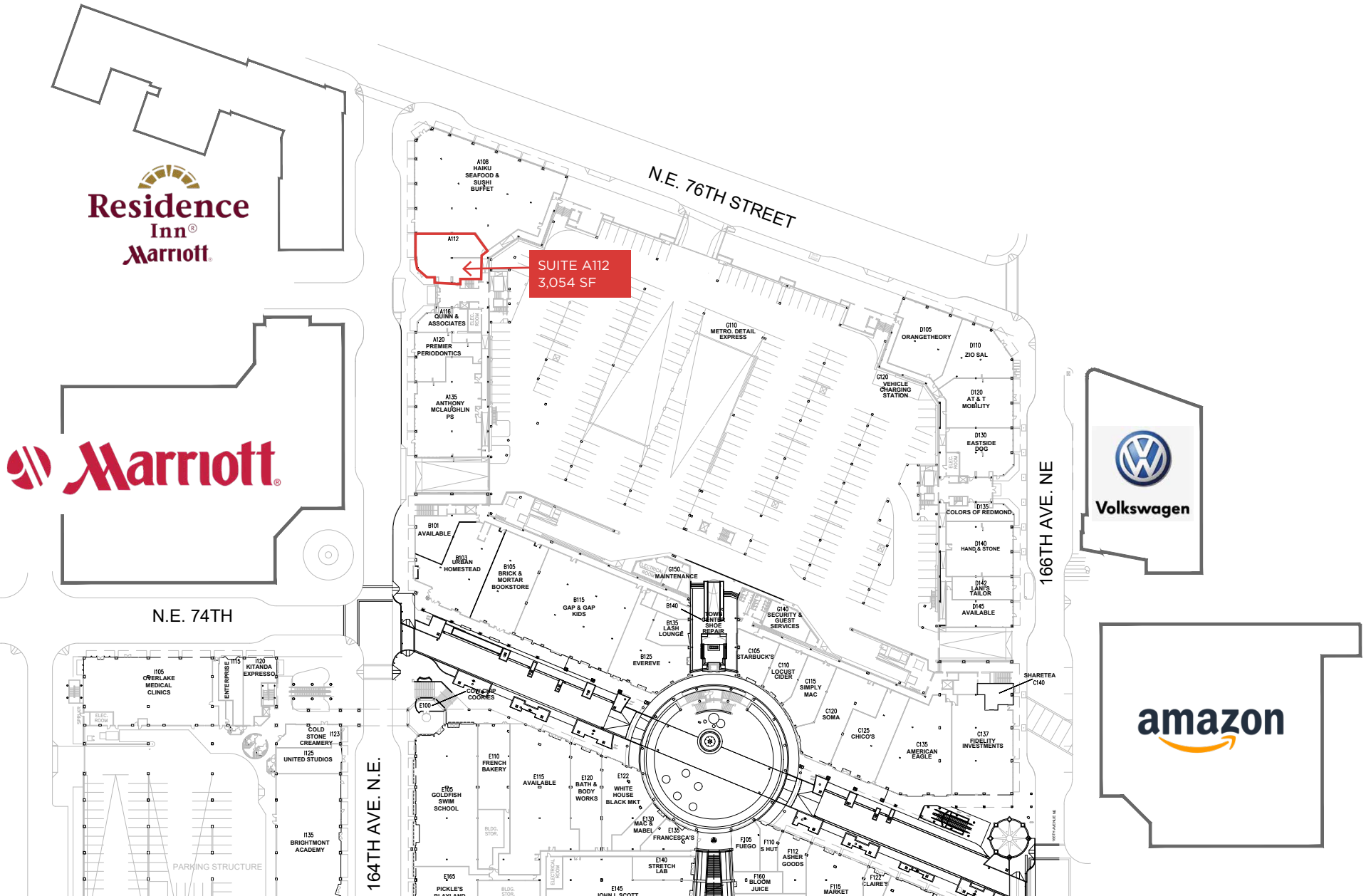
Redmond Town Center is an open-air urban village featuring two levels of office and retail, with over 120 stores, restaurants, healthcare, fitness, entertainment, and three hotels. Located just off of SR-520 approximately 12 miles from Seattle, 8 miles NE of Bellevue and just over 2 miles from Microsoft's World Headquarters Campus. Featuring a strong daytime employment base which includes Microsoft, AT&T, and Amazon.





AVAILABLE OFFICE

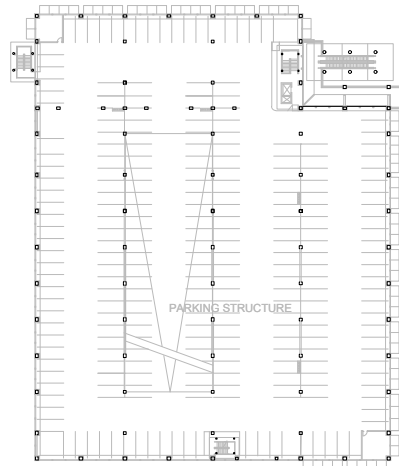
3,054 SF Suite A112



REDMOND TOWN CENTER UPPER LEVEL SITE MAP



N.E. 74TH



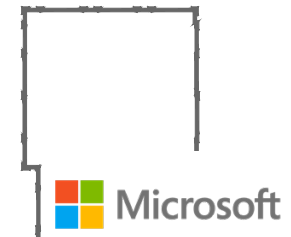
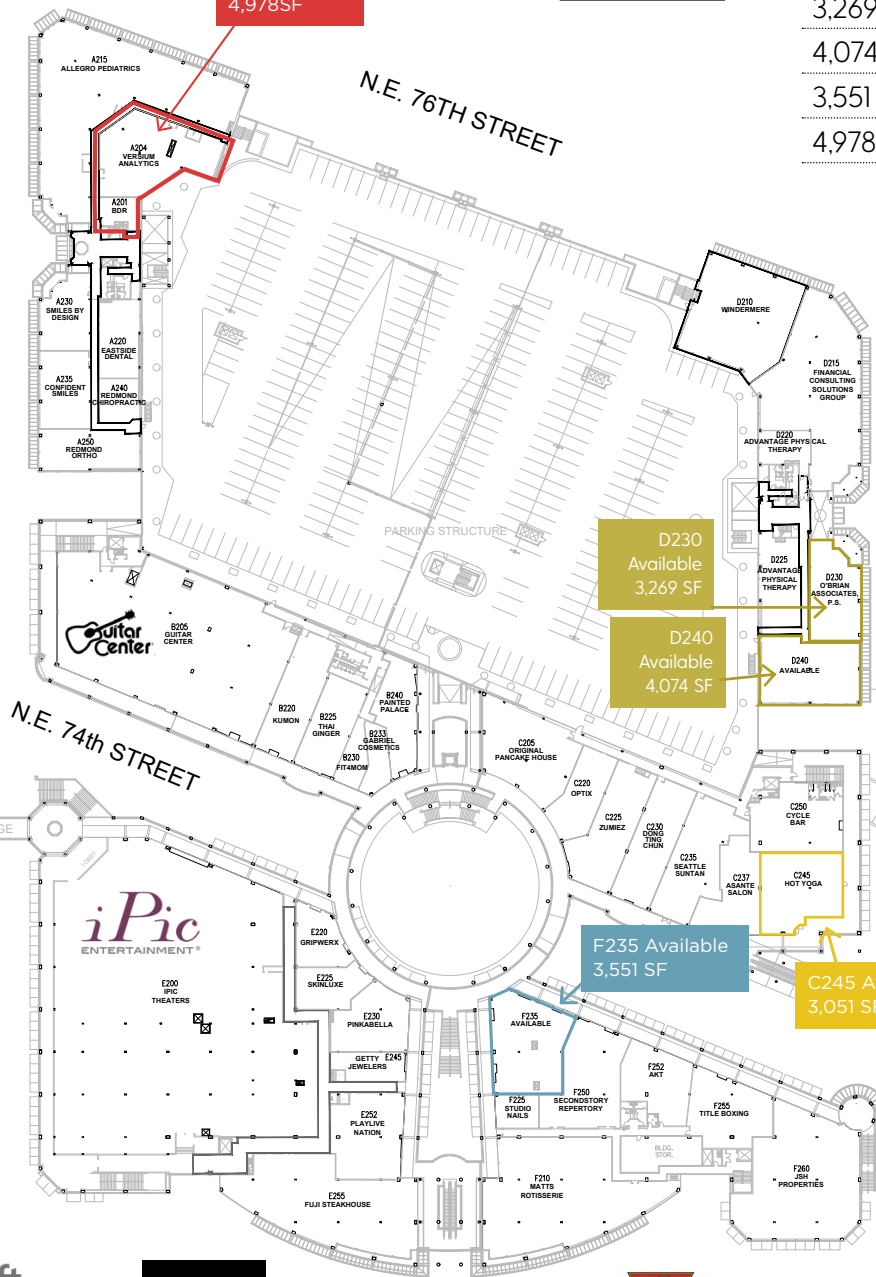
N.E. 73rd WA



AVAILABLE OFFICE

SUITE A204  
4,978SF

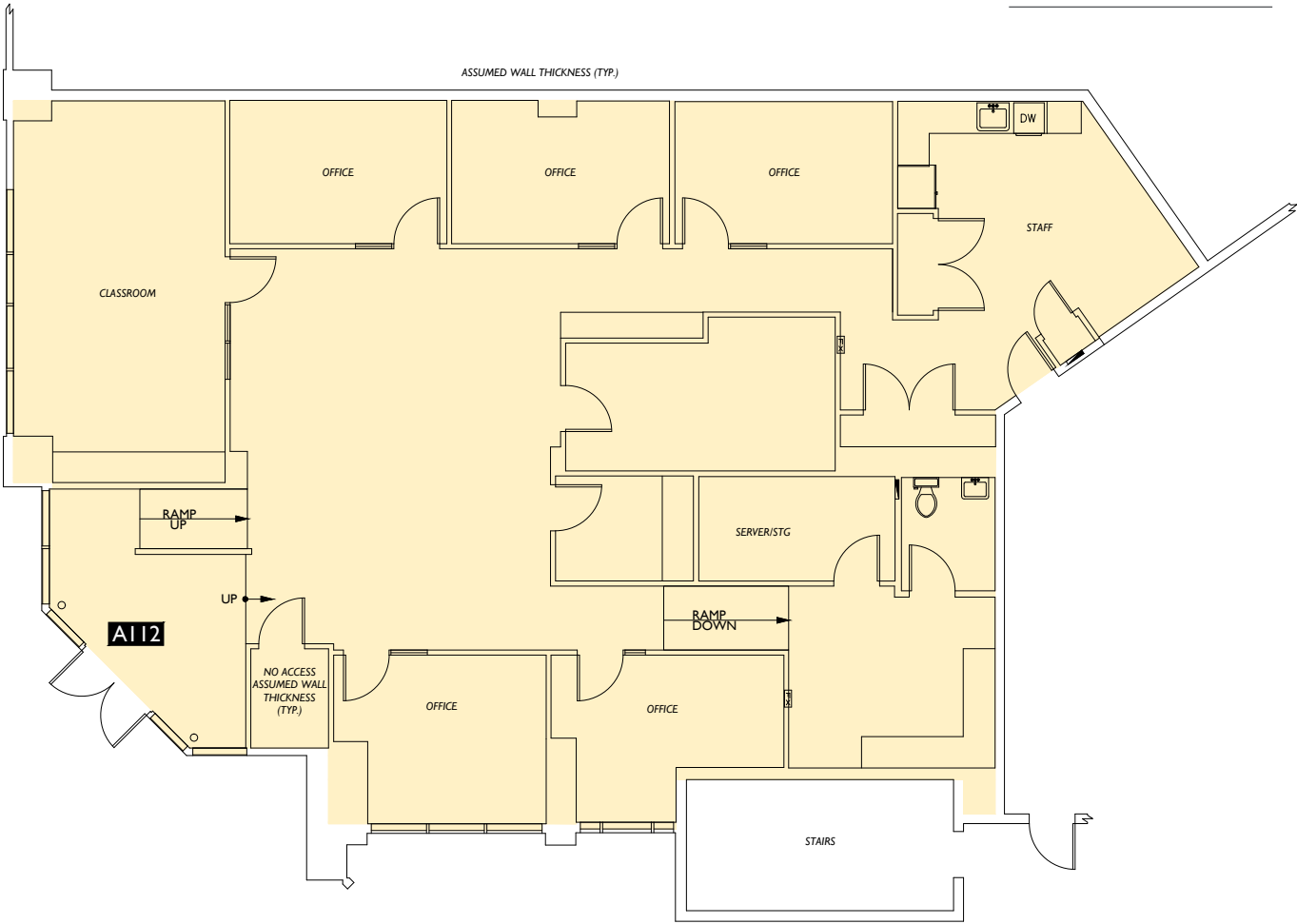
|          |              |                        |
|----------|--------------|------------------------|
| 3,051 SF | Suite C245   |                        |
| 3,269 SF | Suite D230*  | *available 12-01-2021  |
| 4,074 SF | Suite D240   |                        |
| 3,551 SF | Suite F235   |                        |
| 4,978 SF | Suite A204** | **available 01-01-2022 |

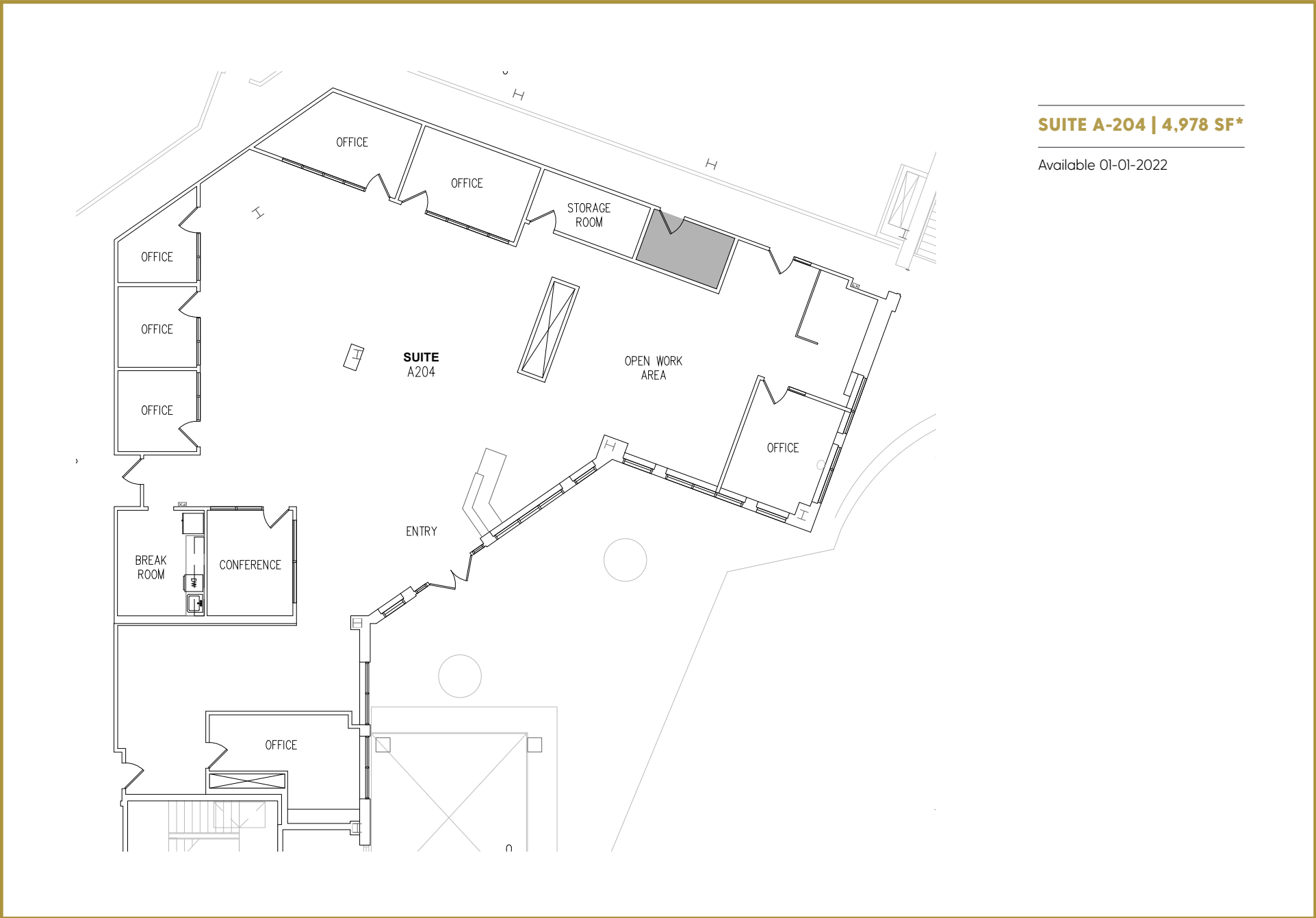






SUITE A-112 | 3,054 SF





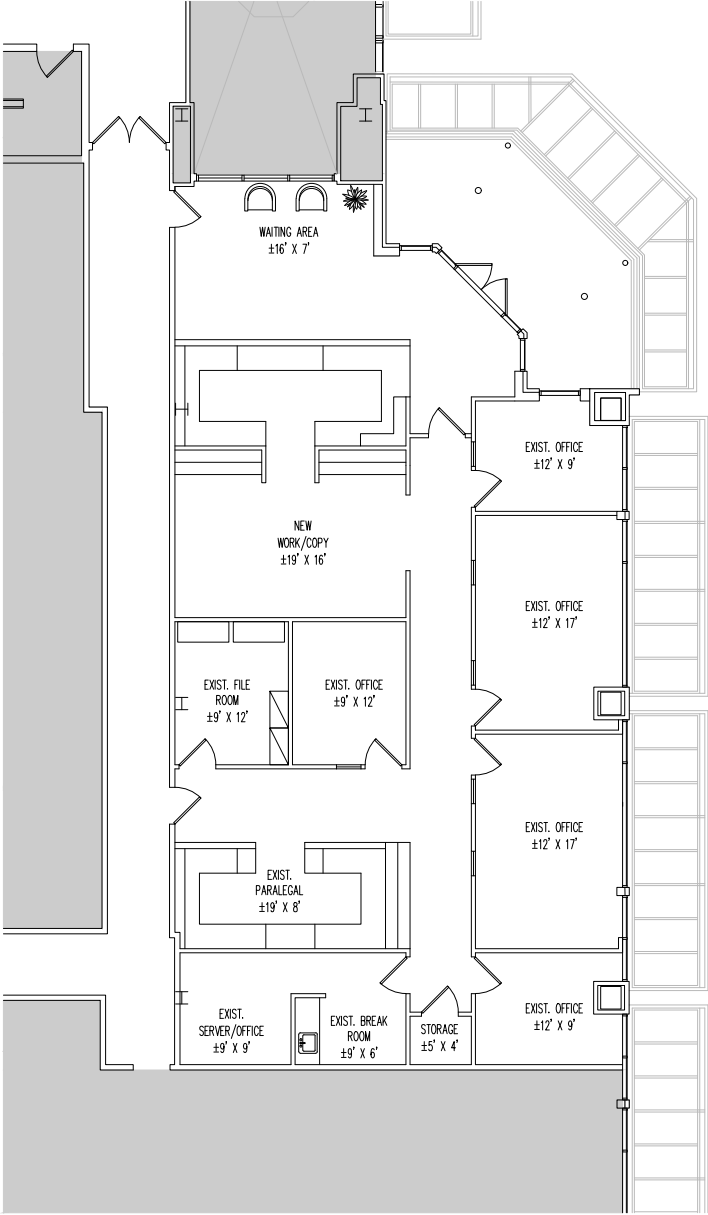
**SUITE A-204 | 4,978 SF\***

Available 01-01-2022



**SUITE D230 | 3,269 SF\***

Available 12-01-2021







**SUITE D240 | 4,074 SF**

2 restrooms  
1 shower

