

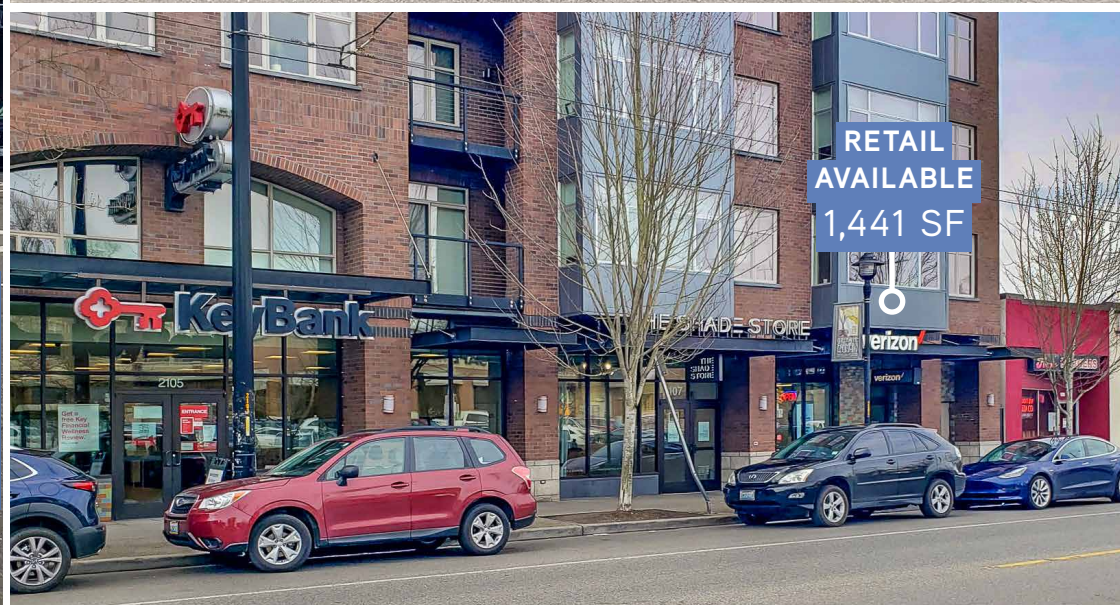


2111 QUEEN ANNE AVE
RETAIL
 1,441 SF
 FOR LEASE

93
 WALK
 SCORE



RETAIL AVAILABLE
 1,441 SF



RETAIL AVAILABLE
 1,441 SF

Sweetbrier Queen Anne

2111 QUEEN ANNE AVE N | SEATTLE WA 98109

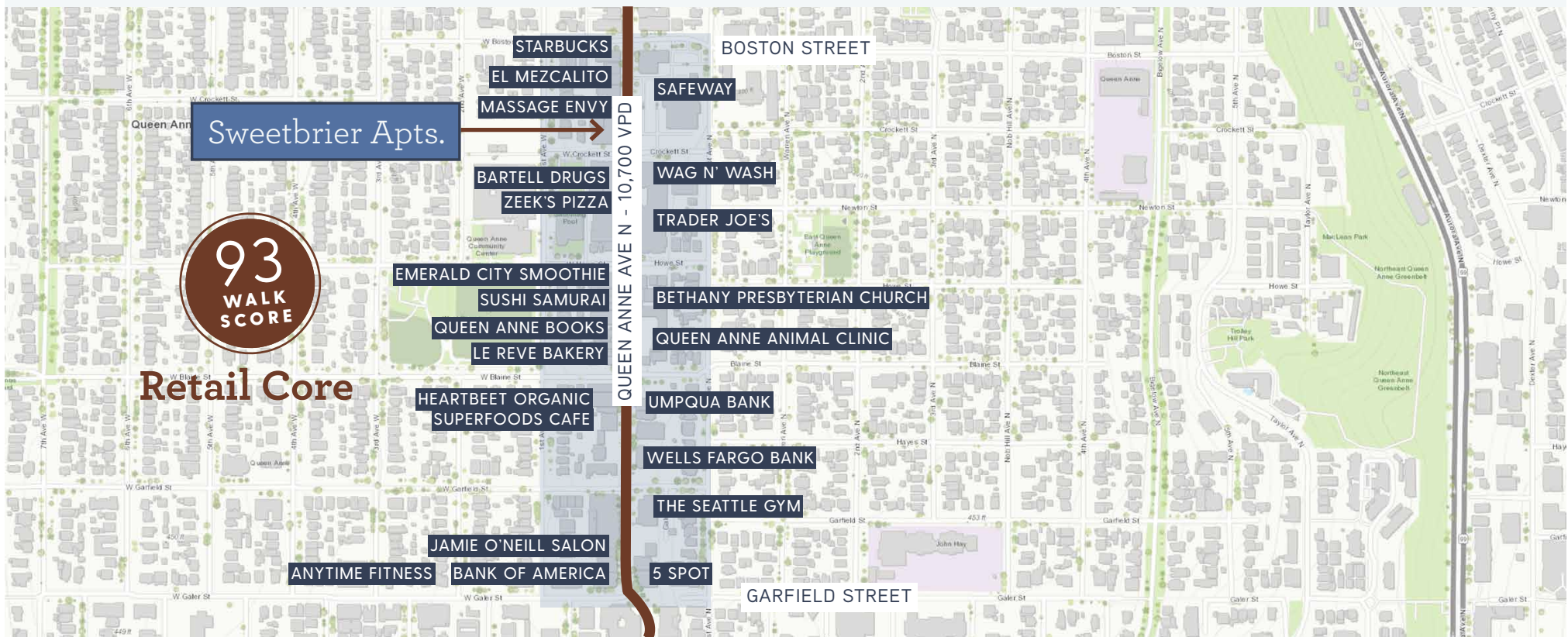
AARON BENNETT
 206.859.4500
 aaronb@jshproperties.com

Sweetbrier Apartments Retail

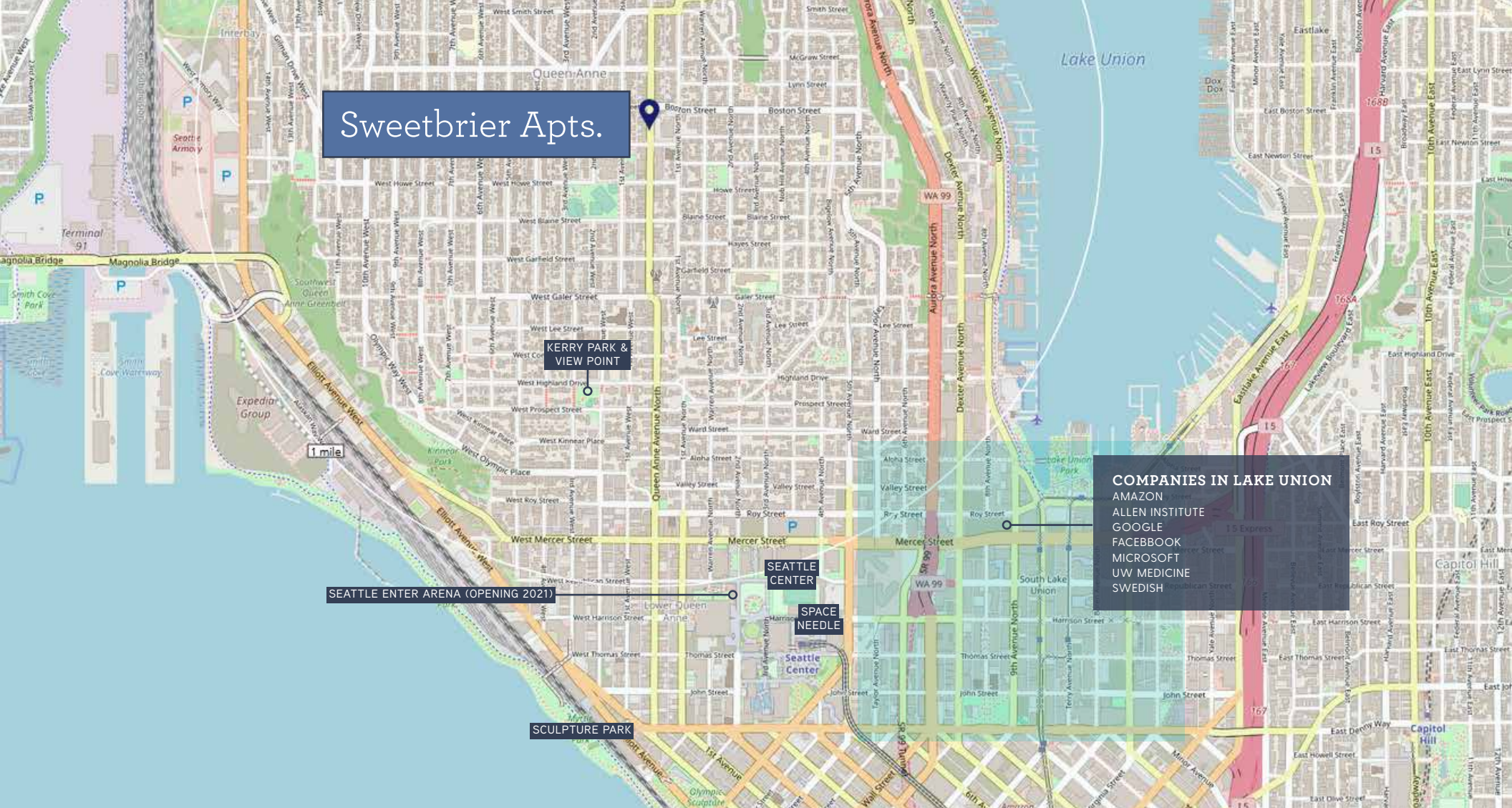
1,441 SF AVAILABLE

\$45/SF+ NNN \$12.86/SF

- » Prime retail space located at Sweetbrier Apartments in upper Queen Anne's retail core.
- » Building offers retail parking.
- » Directly across from Safeway and Trader Joe's.
- » 10,700 VPD on Queen Anne Ave North
- » Queen Anne Ave retail neighbors include Trader Joe's, Safeway, Bartell Drugs, Pharmaca, Wag n Wash, and Zeek's Pizza.



2111 QUEEN ANNE AVENUE NORTH | RETAIL FOR LEASE | 2 |



The redeveloped Seattle Center Arena will:

- » Host professional hockey beginning in the fall of 2021
- » Host the Seattle Storm and WNBA basketball
- » Provide a home for the NBA if a team returns to Seattle
- » Increase the number of top-tier arena concerts and family entertainment events at Seattle Center
- » Establish Seattle as home to one of the premier, historic live-entertainment venues in the world

DEMOGRAPHICS	1 MILE	3 MILES	5 MILES
POPULATION	39,220	266,166	482,041
DAYTIME POPULATION	46,309	493,977	677,333
HOUSEHOLDS	23,033	145,974	240,066
AVG. HH INCOME	\$146,346	\$127,574	\$133,050

2111 QUEEN ANNE AVENUE NORTH | RETAIL FOR LEASE | 3 |

